

C-NCAP 测评车辆性能画像

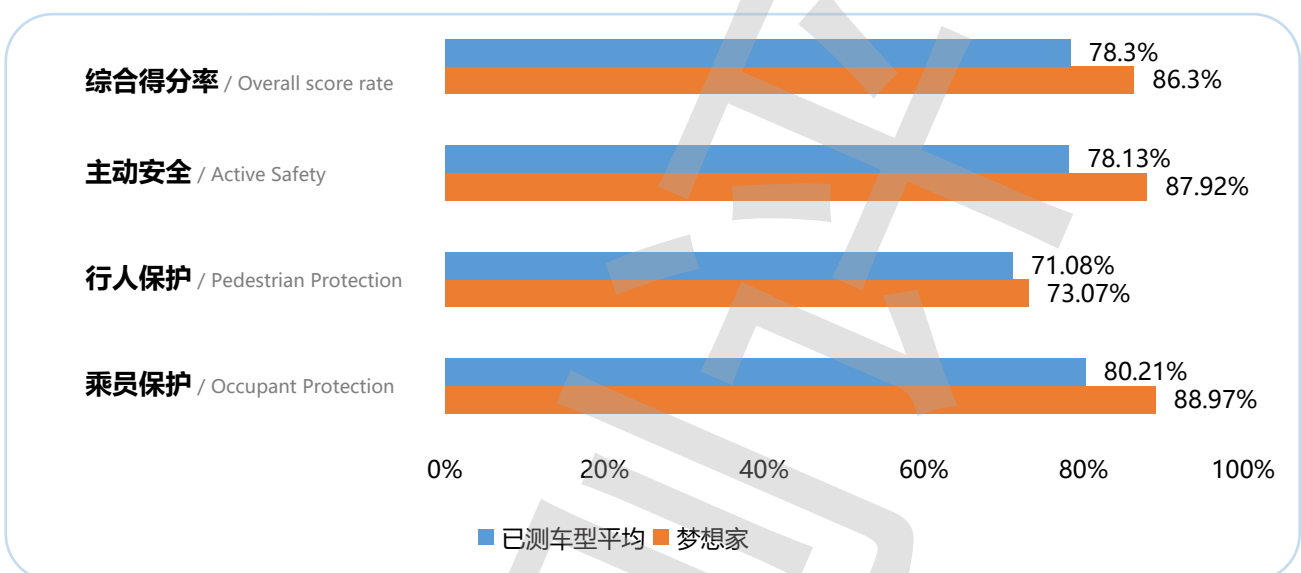
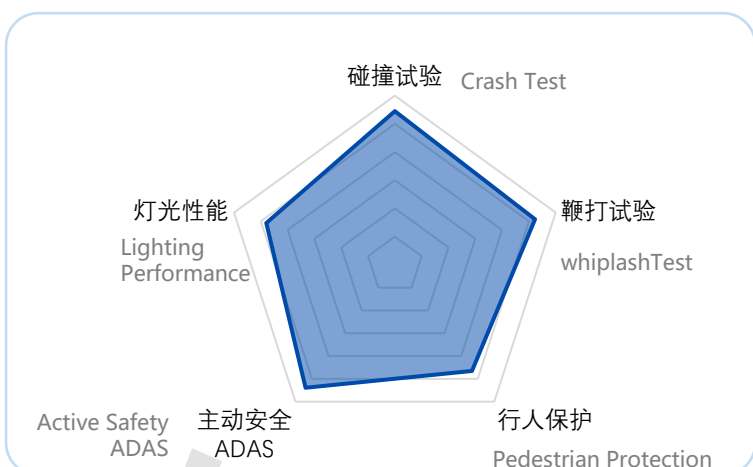
C-NCAP Performance portrait of the test vehicle

梦想家

款型 / Styles	类别 / Category	指导价格 / Guide Price
低碳版 想+智驾包	MPV	¥ 389900

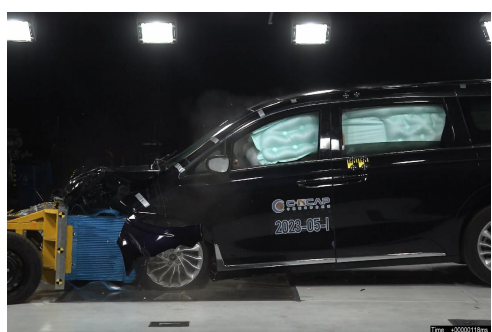
综合得分率
Overall score rate


86.3%






项目 / Item	部分得分率 / Partial Scoring Rate	权重 / Weighting	部分得分率*权重 / Partial Score Rate*Weighting
乘员保护 / Occupant Protection	88.97%	60%	53.38%
行人保护 / Pedestrian Protection	73.07%	15%	10.96%
主动安全 / Active Safety	87.92%	25%	21.98%
电安全 / Electrical Safety			
综合得分率 / Overall score rate		86.3%	
星级 / Star Rating		★★★★★	

乘员保护 Occupant Protection	碰撞: 64.095 (满分72分) Crash: 64.095 (Full score of 72)	发生碰撞时车内乘员安全指数 Occupant safety index during collision/crash
	鞭打: 5.920 (满分7分) Whiplash: 5.920 (Full score of 7)	被追尾时车内乘员安全指数 Occupant safety index when rear-ended
行人保护 Pedestrian Protection	头型: 6.538 (满分10分) Headform: 6.538 (Full score of 10)	对车外行人头部的保护效果 Protection effect on the head of pedestrians
	腿型: 4.422 (满分5分) Legform: 4.422 (Full score of 5)	对车外行人腿部的保护效果 Protection effect on the legs of pedestrians
主动安全 Active Safety	CCR :10.722 (满分11分) CCR :10.722 (Full score of 11)	车对车自动刹车能力 Car to car AEB performance
	VRU_Ped :9.695(满分10分) VRU_Ped :9.695 (Full score of 10)	车对行人自动刹车能力 Car to pedestrians AEB performance
	VRU_TW :7.000(满分11分) VRU_TW :7.000 (Full score of 11)	车对二轮车自动刹车能力 Car to TW AEB performance
	LKA: 3 (满分3分) LKA: 3 (Full score of 3)	车道保持能力 Lane Keeping ability
	照明: 7.592 (满分10分) Lighting: 7.592 (Full score of 10)	车辆照明效果 Vehicle Lighting Effectiveness



备注: 带有  标志的代表该车型此项目在当前测评版本全部车型中排名前20%。

Note: Those with a  mark represent the top 20% of all models in the current evaluation version.



扫码查询更多车型成绩。
Scan the code to check the results of more models.