

C-NCAP 测评车辆性能画像

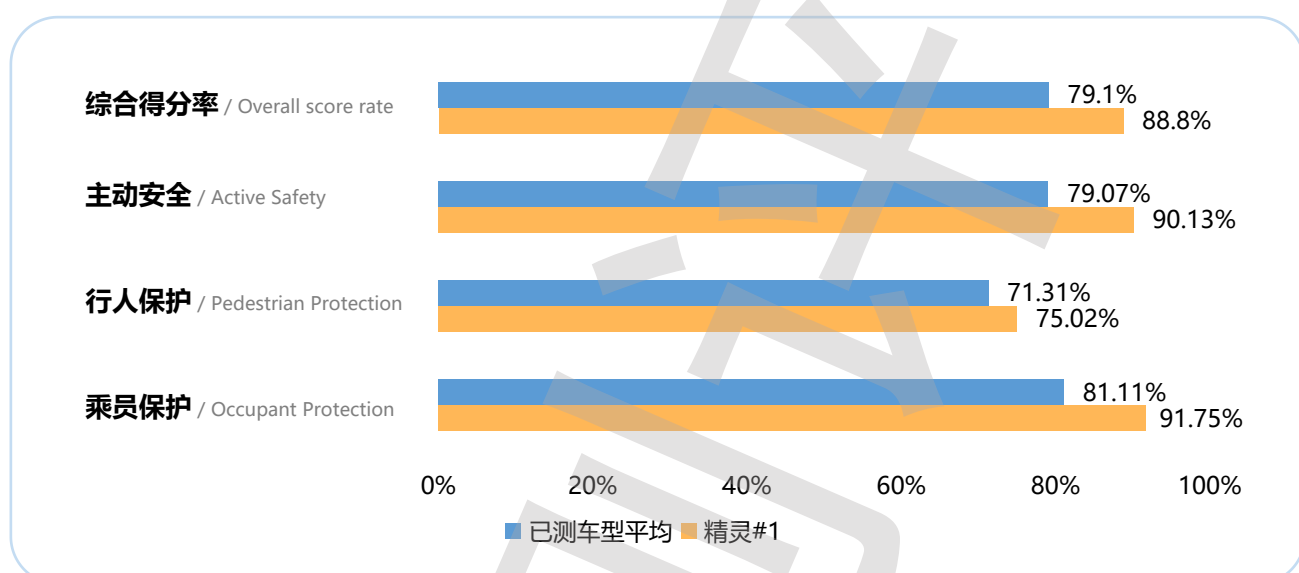
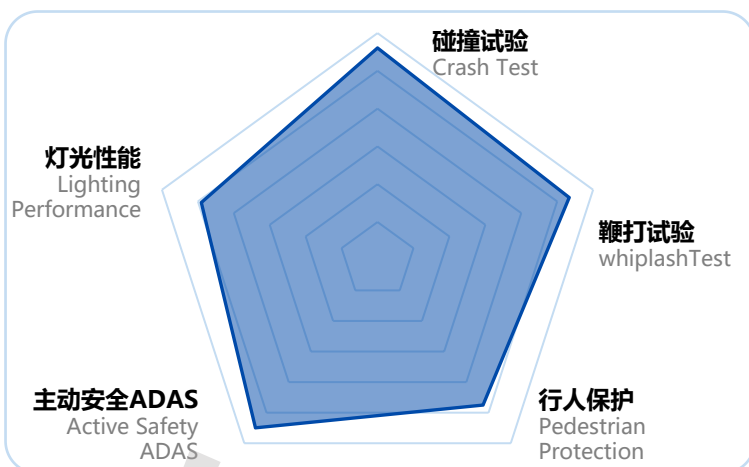
C-NCAP Performance portrait of the test vehicle

精灵#1

款型 / Styles	类别 / Category	指导价格 / Guide Price
Premium版	小型SUV	¥ 24.5万

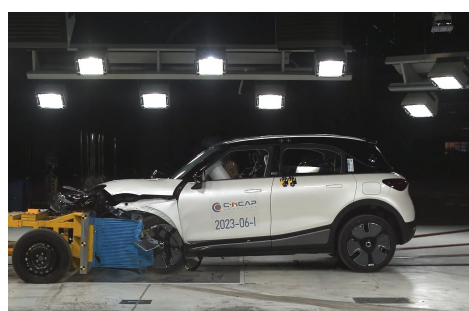
综合得分率
Overall score rate

88.8%

项目 / Item	部分得分率 Partial Scoring Rate	权重 Weighting	部分得分率*权重 Partial Score Rate*Weighting
乘员保护 Occupant Protection	91.75%	60%	55.05%
行人保护 Pedestrian Protection	75.02%	15%	11.25%
主动安全 Active Safety	90.13%	25%	22.53%
电安全 Electrical Safety			
综合得分率 Overall score rate		88.8%	
星级 Star Rating		★★★★★	

乘员保护 Occupant Protection	碰撞: 66.339 (满分72分) Crash: 66.339 (Full score of 72)	发生碰撞时车内乘员安全指数 Occupant safety index during collision/crash
	鞭打: 6.069 (满分7分) Whiplash: 6.069 (Full score of 7)	被追尾时车内乘员安全指数 Occupant safety index when rear-ended
行人保护 Pedestrian Protection	头型: 6.253 (满分10分) Headform: 6.253 (Full score of 10)	对车外行人头部的保护效果 Protection effect on the head of pedestrians
	腿型: 5.000 (满分5分) Legform: 5.000 (Full score of 5)	对车外行人腿部的保护效果 Protection effect on the legs of pedestrians
主动安全 Active Safety	CCR :10.733 (满分11分) CCR :10.733 (Full score of 11)	车对车自动刹车能力 Car to car AEB performance
	VRU_Ped :8.761(满分10分) VRU_Ped :8.761 (Full score of 10)	车对行人自动刹车能力 Car to pedestrians AEB performance
	VRU_TW :9.165(满分11分) VRU_TW :9.165 (Full score of 11)	车对二轮车自动刹车能力 Car to TW AEB performance
	LKA: 3 (满分3分) LKA: 3 (Full score of 3)	车道保持能力 Lane keeping ability
	照明: 7.810 (满分10分) Lighting: 7.810 (Full score of 10)	车辆照明效果 Vehicle Lighting Effectiveness



备注: 带有👍标志的代表该车型此项目在当前测评版本全部车型中排名前20%。

Note: Those with a 👍 mark represent the top 20% of all models in the current evaluation version.



扫码查询更多车型成绩。

Scan the code to check the results of more models.