

C-NCAP 测评车辆性能画像

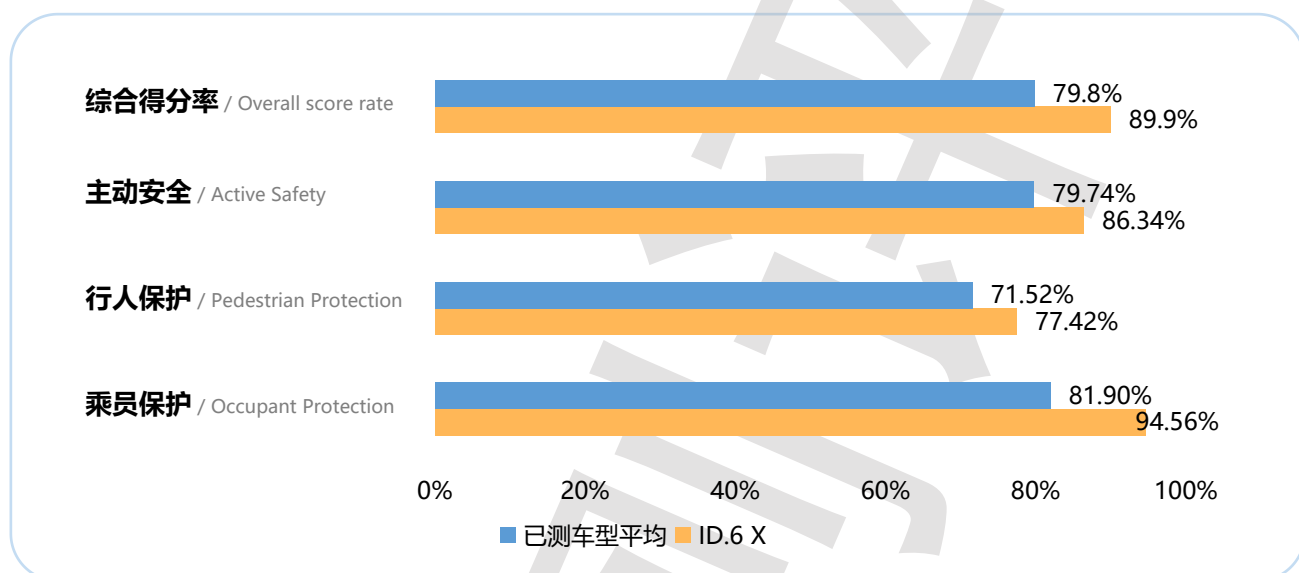
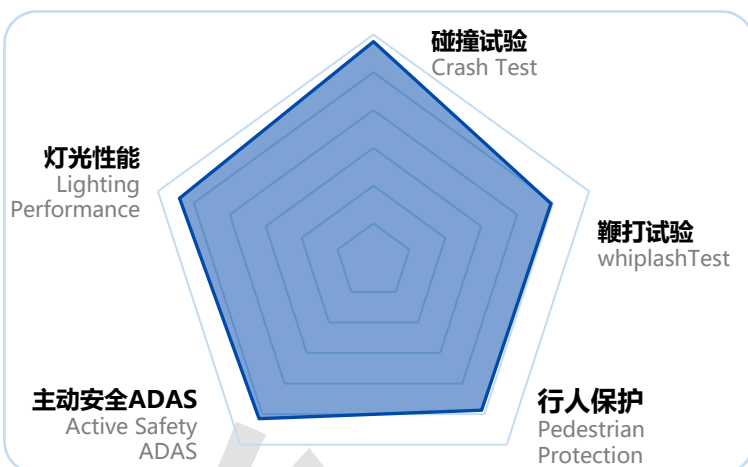
C-NCAP Performance portrait of the test vehicle

ID.6X

车型 / Styles	类别 / Category	指导价格 / Guide Price
极智长续航版	中大型SUV	¥ 29.3888万

综合得分率
Overall score rate

89.9%

乘员保护
Occupant Protection

行人保护
Pedestrian Protection


主动安全
Active Safety



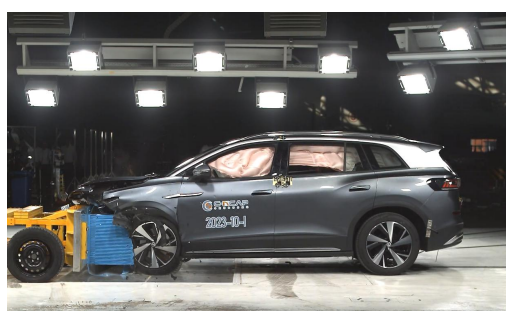
94.56%

77.42%


86.34%

	部分得分率 Partial Scoring Rate	权重 Weighting	部分得分率*权重 Partial Score Rate*Weighting
乘员保护 Occupant Protection	94.56%	60%	56.74%
行人保护 Pedestrian Protection	77.42%	15%	11.61%
主动安全 Active Safety	86.34%	25%	21.59%
电安全 Electrical Safety			
综合得分率 Overall score rate		89.9%	
星级 Star Rating		★★★★★	

乘员保护 Occupant Protection	碰撞: 69.302 (满分72分) Crash: 69.302 (Full score of 72)	发生碰撞时车内乘员安全指数 Occupant safety index during collision/crash	
	鞭打: 5.518 (满分7分) Whiplash: 5.518 (Full score of 7)	被追尾时车内乘员安全指数 Occupant safety index when rear-ended	
行人保护 Pedestrian Protection	头型: 6.613 (满分10分) Headform: 6.613 (Full score of 10)	对车外行人头部的保护效果 Protection effect on the head of pedestrians	
	腿型: 5.000 (满分5分) Legform: 5.000 (Full score of 5)	对车外行人腿部的保护效果 Protection effect on the legs of pedestrians	
主动安全 Active Safety	CCR :10.340 (满分11分) CCR :10.340 (Full score of 11)	车对车自动刹车能力 Car to car AEB performance	
	VRU_Ped :9.789(满分10分) VRU_Ped :9.789 (Full score of 10)	车对行人自动刹车能力 Car to pedestrians AEB performance	
	VRU_TW :5.494(满分11分) VRU_TW :5.494 (Full score of 11)	车对二轮车自动刹车能力 Car to TW AEB performance	
	LKA: 3 (满分3分) LKA: 3 (Full score of 3)	车道保持能力 Lane keeping ability	
	照明: 8.795 (满分10分) Lighting: 8.795 (Full score of 10)	车辆照明效果 Vehicle Lighting Effectiveness	



备注: 带有  标志的代表该车型此项目在当前测评版本全部车型中排名前20%。

Note: Those with a  mark represent the top 20% of all models in the current evaluation version.



扫码查询更多车型成绩。

Scan the code to check the results of more models.