

C-NCAP 测评车辆性能画像

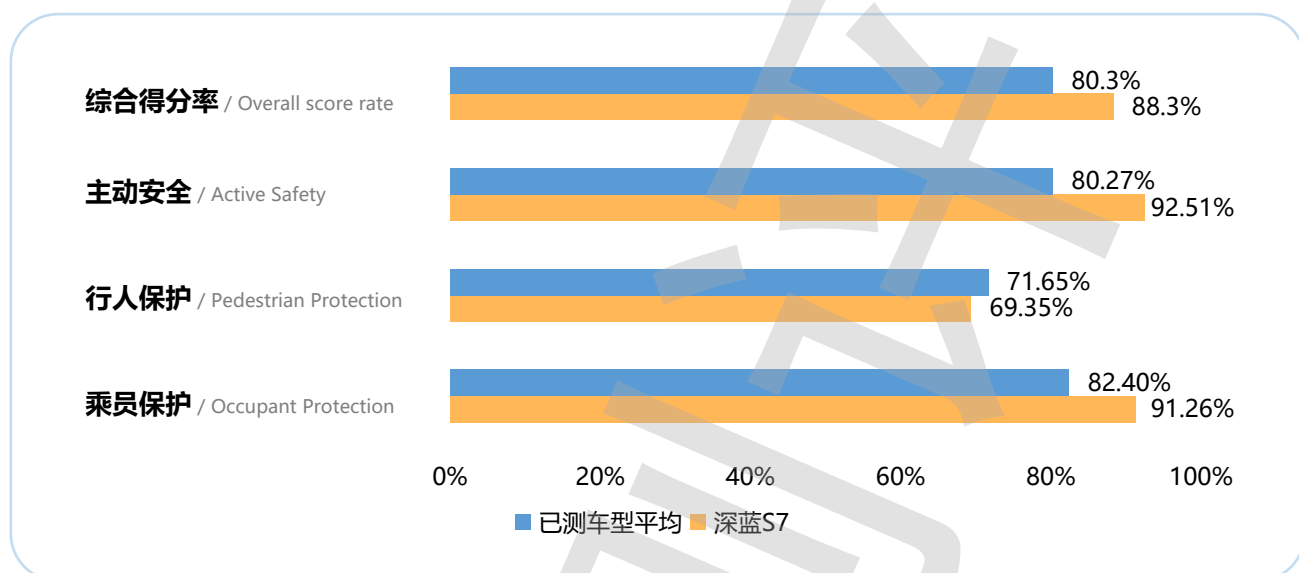
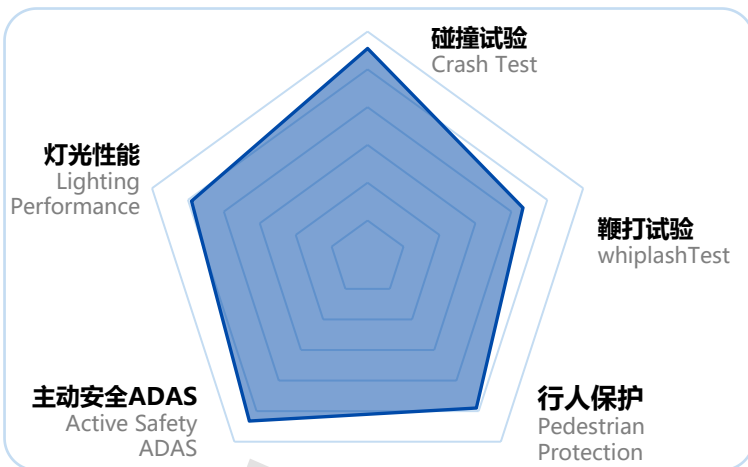
C-NCAP Performance portrait of the test vehicle

深蓝S7

款型 / Styles	类别 / Category	指导价格 / Guide Price
EV 520KM短续航	紧凑型SUV	¥ 18.99万元

综合得分率
Overall score rate

88.3%

乘员保护
Occupant Protection

行人保护
Pedestrian Protection

主动安全
Active Safety

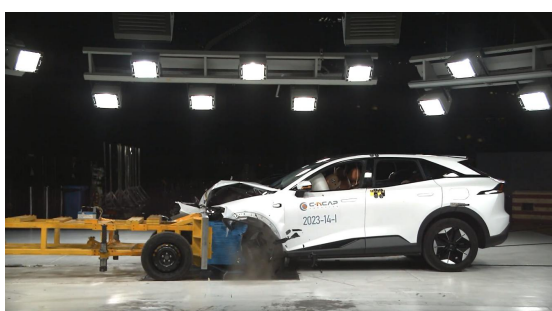
91.26%

69.35%

92.51%

部分得分率 Partial Scoring Rate	权重 Weighting	部分得分率*权重 Partial Score Rate*Weighting	
乘员保护 Occupant Protection	91.26%	60%	54.76%
行人保护 Pedestrian Protection	69.35%	15%	10.40%
主动安全 Active Safety	92.51%	25%	23.13%
电安全 Electrical Safety	⚠️		
综合得分率 Overall score rate	88.3%		
星级 Star Rating	★★★★★		

乘员保护 Occupant Protection	碰撞: 65.876 (满分72分) Crash: 65.876 (Full score of 72)	发生碰撞时车内乘员安全指数 Occupant safety index during collision/crash
	鞭打: 6.105 (满分7分) Whiplash: 6.105 (Full score of 7)	被追尾时车内乘员安全指数 Occupant safety index when rear-ended
行人保护 Pedestrian Protection	头型: 5.922 (满分10分) Headform: 5.922 (Full score of 10)	对车外行人头部的保护效果 Protection effect on the head of pedestrians
	腿型: 4.481 (满分5分) Legform: 4.481 (Full score of 5)	对车外行人腿部的保护效果 Protection effect on the legs of pedestrians
主动安全 Active Safety	CCR: 10.737 (满分11分) CCR: 10.737 (Full score of 11)	车对车自动刹车能力 Car to car AEB performance
	VRU_Ped: 9.929 (满分10分) VRU_Ped: 9.929 (Full score of 10)	车对行人自动刹车能力 Car to pedestrians AEB performance
	VRU_TW: 11.000(满分11分) VRU_TW: 11.000 (Full score of 11)	车对二轮车自动刹车能力 Car to TW AEB performance
	LKA: 3 (满分3分) LKA: 3 (Full score of 3)	车道保持能力 Lane keeping ability
	照明: 6.852 (满分10分) Lighting: 6.852 (Full score of 10)	车辆照明效果 Vehicle Lighting Effectiveness



备注: 带有👍标志的代表该车型此项目在当前测评版本全部车型中排名前20%。

Note: Those with a 👍 mark represent the top 20% of all models in the current evaluation version.



扫码查询更多车型成绩。

Scan the code to check the results of more models.