

# C-NCAP 测评车辆性能画像

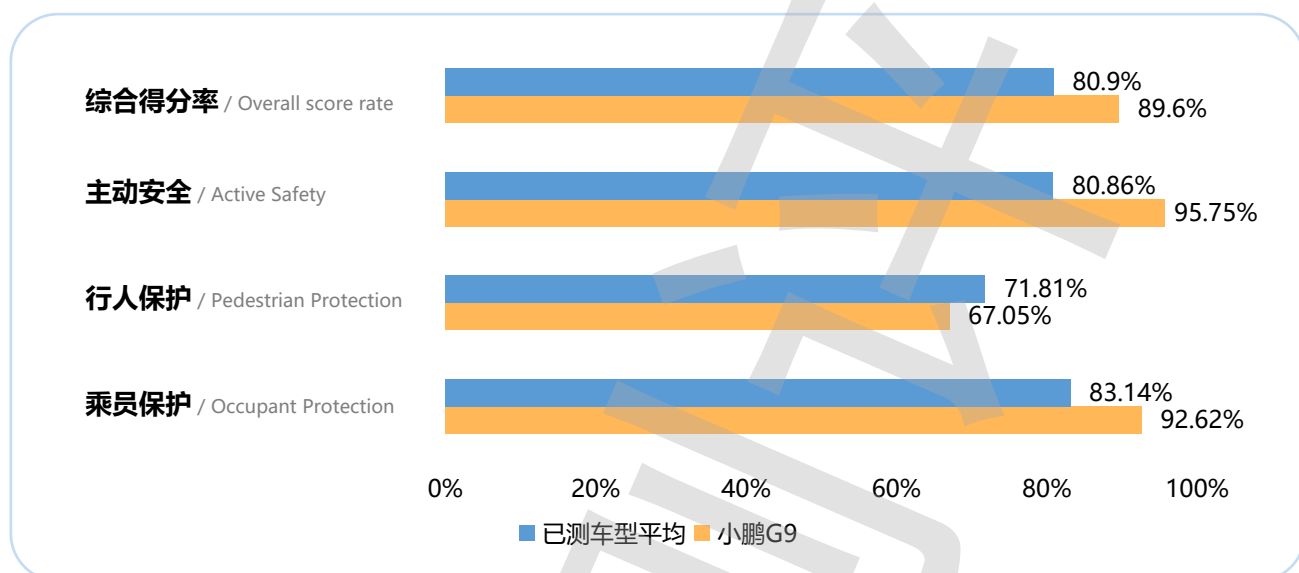
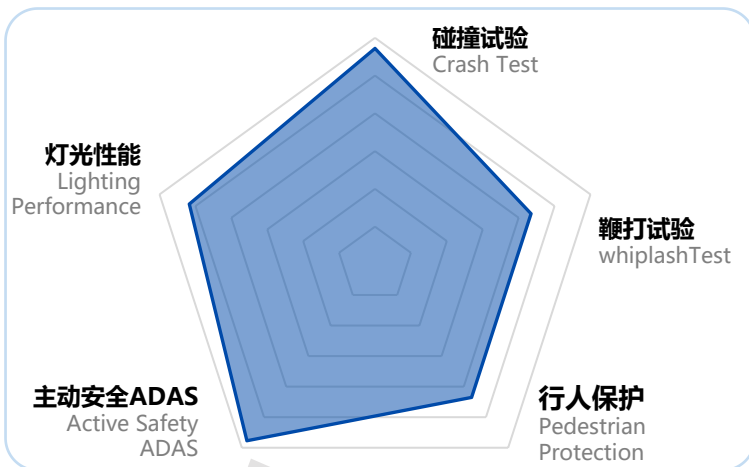
## C-NCAP Performance portrait of the test vehicle

**G9**

款型 / Styles	类别 / Category	指导价格 / Guide Price
702 Pro	SUV	¥ 34.99万元

**综合得分率**  
Overall score rate

# 89.6%

**乘员保护**  
Occupant Protection

**行人保护**  
Pedestrian Protection

**主动安全**  
Active Safety



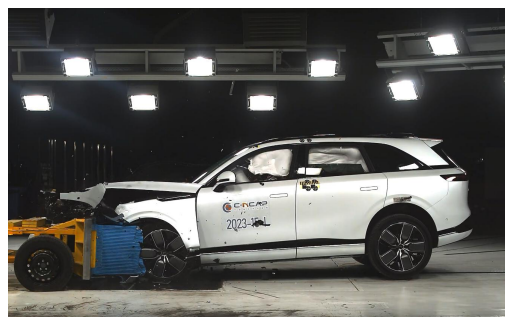
92.62%

67.05%

95.75%


部分得分率 Partial Scoring Rate	权重 Weighting	部分得分率*权重 Partial Score Rate*Weighting	
乘员保护 Occupant Protection	92.62%	60%	55.57%
行人保护 Pedestrian Protection	67.05%	15%	10.06%
主动安全 Active Safety	95.75%	25%	23.94%
电安全 Electrical Safety	⚠️		
综合得分率 Overall score rate	89.6%		
星级 Star Rating	★★★★★		

<b>乘员保护</b> Occupant Protection	<b>碰撞: 67.967 (满分72分)</b> Crash: 67.967 (Full score of 72)	<b>发生碰撞时车内乘员安全指数</b> Occupant safety index during collision/crash	👍
	<b>鞭打: 4.684 (满分7分)</b> Whiplash: 4.684 (Full score of 7)	<b>被追尾时车内乘员安全指数</b> Occupant safety index when rear-ended	
<b>行人保护</b> Pedestrian Protection	<b>头型: 5.058 (满分10分)</b> Headform: 5.058 (Full score of 10)	<b>对车外行人头部的保护效果</b> Protection effect on the head of pedestrians	
	<b>腿型: 5.000 (满分5分)</b> Legform: 5.000 (Full score of 5)	<b>对车外行人腿部的保护效果</b> Protection effect on the legs of pedestrians	👍
<b>主动安全</b> Active Safety	<b>CCR: 10.347 (满分11分)</b> CCR: 10.347 (Full score of 11)	<b>车对车自动刹车能力</b> Car to car AEB performance	
	<b>VRU_Ped: 10 (满分10分)</b> VRU_Ped: 10 (Full score of 10)	<b>车对行人自动刹车能力</b> Car to pedestrians AEB performance	👍
	<b>VRU_TW: 11 (满分11分)</b> VRU_TW: 11 (Full score of 11)	<b>车对二轮车自动刹车能力</b> Car to TW AEB performance	👍
	<b>LKA: 3 (满分3分)</b> LKA: 3 (Full score of 3)	<b>车道保持能力</b> Lane keeping ability	👍
	<b>照明: 8.343 (满分10分)</b> Lighting: 8.343 (Full score of 10)	<b>车辆照明效果</b> Vehicle Lighting Effectiveness	👍



备注: 带有👍标志的代表该车型此项目在当前测评版本全部车型中排名前20%。

Note: Those with a 👍 mark represent the top 20% of all models in the current evaluation version.



扫码查询更多车型成绩。  
Scan the code to check the results of more models.