

C-NCAP 测评车辆性能画像

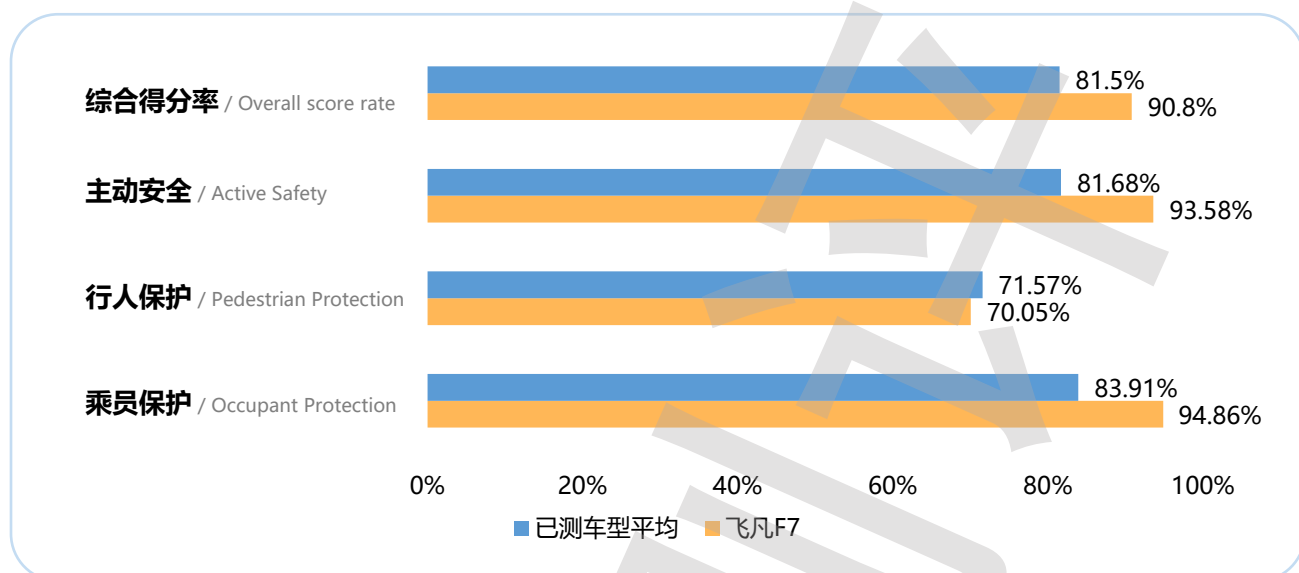
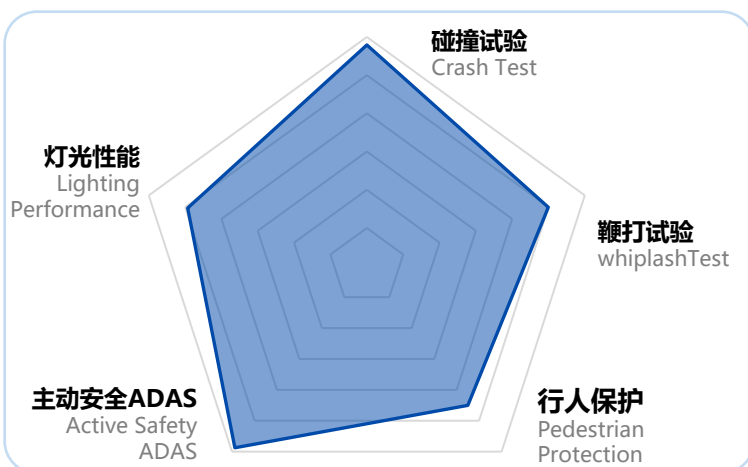
C-NCAP Performance portrait of the test vehicle

飞凡F7

款型 / Styles	类别 / Category	指导价格 / Guide Price
进阶版	中大型轿车	¥ 22.99万元

综合得分率
Overall score rate

90.8%

乘员保护
Occupant Protection



94.86%

行人保护
Pedestrian Protection




70.05%

主动安全
Active Safety



93.58%

项目 / Item	部分得分率 / Partial Scoring Rate	权重 / Weighting	部分得分率*权重 / Partial Score Rate*Weighting
乘员保护 / Occupant Protection	94.86%	60%	56.92%
行人保护 / Pedestrian Protection	70.05%	15%	10.51%
主动安全 / Active Safety	93.58%	25%	23.40%
电安全 / Electrical Safety			
综合得分率 / Overall score rate			90.8%
星级 / Star Rating			★★★★★

乘员保护
Occupant Protection

碰撞: 68.983 (满分72分)
Crash: 68.983 (Full score of 72)

鞭打: 5.593 (满分7分)
Whiplash: 5.593 (Full score of 7)

发生碰撞时车内乘员安全指数
Occupant safety index during collision/crash 

被追尾时车内乘员安全指数
Occupant safety index when rear-ended

行人保护
Pedestrian Protection

头型: 5.508 (满分10分)
Headform: 5.508 (Full score of 10)

腿型: 5 (满分5分)
Legform: 5 (Full score of 5)

对车外行人头部的保护效果
Protection effect on the head of pedestrians

对车外行人腿部的保护效果
Protection effect on the legs of pedestrians 

主动安全
Active Safety

CCR: 10.814 (满分11分)
CCR: 10.814 (Full score of 11)

VRU_Ped: 10 (满分10分)
VRU_Ped: 10 (Full score of 10)

VRU_TW: 10.193 (满分11分)
VRU_TW: 10.193 (Full score of 11)

LKA: 3 (满分3分)
LKA: 3 (Full score of 3)

照明: 7.857 (满分10分)
Lighting: 7.857 (Full score of 10)

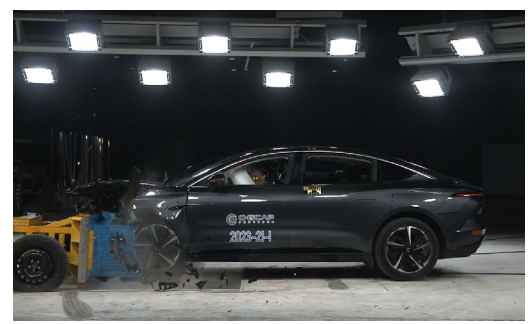
车对车自动刹车能力
Car to car AEB performance


车对行人自动刹车能力
Car to pedestrians AEB performance 


车对二轮车自动刹车能力
Car to TW AEB performance


车道保持能力
Lane keeping ability 

车辆照明效果
Vehicle Lighting Effectiveness



备注: 带有  标志的代表该车型此项目在当前测评版本全部车型中排名前20%。

Note: Those with a  mark represent the top 20% of all models in the current evaluation version.



扫码查询更多车型成绩。
Scan the code to check the results of more models.