

C-NCAP 测评车辆性能画像

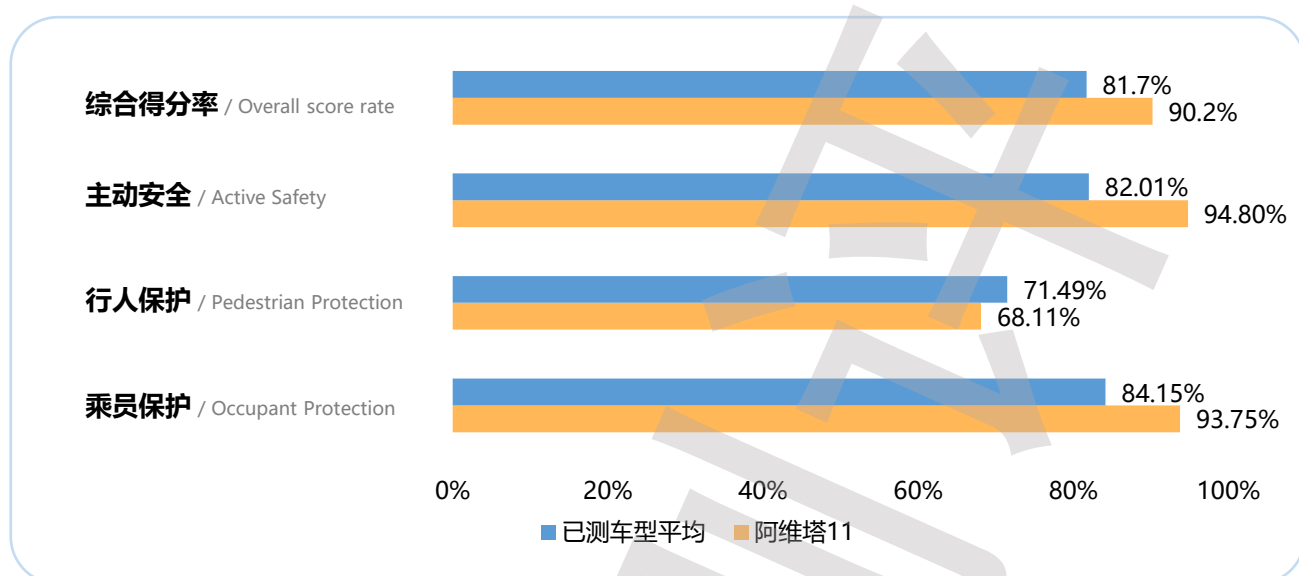
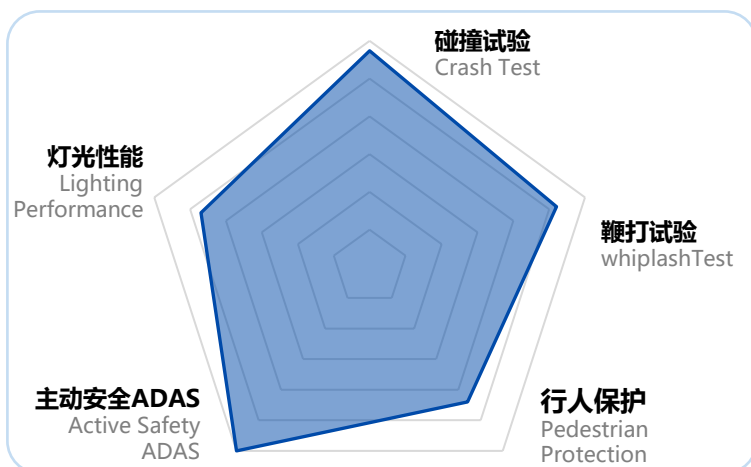
C-NCAP Performance portrait of the test vehicle

阿维塔11

款型 / Styles	类别 / Category	指导价格 / Guide Price
90度 四驱版	SUV	¥ 32.50万元

综合得分率
Overall score rate

90.2%

乘员保护
Occupant Protection

行人保护
Pedestrian Protection


主动安全
Active Safety



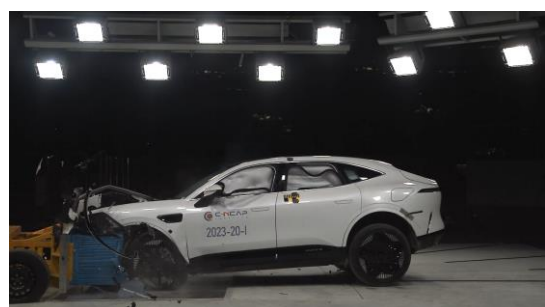
93.75%

68.11%


94.80%

项目 / Item	部分得分率 Partial Scoring Rate	权重 Weighting	部分得分率*权重 Partial Score Rate*Weighting
乘员保护 Occupant Protection	93.75%	60%	56.25%
行人保护 Pedestrian Protection	68.11%	15%	10.22%
主动安全 Active Safety	94.80%	25%	23.70%
电安全 Electrical Safety			
综合得分率 Overall score rate		90.2%	
星级 Star Rating		★★★★★	

乘员保护 Occupant Protection	碰撞: 68.245 (满分72分) Crash: 68.245 (Full score of 72)	发生碰撞时车内乘员安全指数 Occupant safety index during collision/crash	
	鞭打: 5.881 (满分7分) Whiplash: 5.881 (Full score of 7)	被追尾时车内乘员安全指数 Occupant safety index when rear-ended	
行人保护 Pedestrian Protection	头型: 5.216 (满分10分) Headform: 5.216 (Full score of 10)	对车外行人头部的保护效果 Protection effect on the head of pedestrians	
	腿型: 5 (满分5分) Legform: 5 (Full score of 5)	对车外行人腿部的保护效果 Protection effect on the legs of pedestrians	
主动安全 Active Safety	CCR: 11 (满分11分) CCR: 11 (Full score of 11)	车对车自动刹车能力 Car to car AEB performance	
	VRU_Ped: 10 (满分10分) VRU_Ped: 10 (Full score of 10)	车对行人自动刹车能力 Car to pedestrians AEB performance	
	VRU_TW: 11 (满分11分) VRU_TW: 11 (Full score of 11)	车对二轮车自动刹车能力 Car to TW AEB performance	
	LKA: 3 (满分3分) LKA: 3 (Full score of 3)	车道保持能力 Lane keeping ability	
	照明: 7.398 (满分10分) Lighting: 7.398 (Full score of 10)	车辆照明效果 Vehicle Lighting Effectiveness	



备注: 带有  标志的代表该车型此项目在当前测评版本全部车型中排名前20%。

Note: Those with a  mark represent the top 20% of all models in the current evaluation version.



扫码查询更多车型成绩。

Scan the code to check the results of more models.