



中国智能网联汽车技术规程

# 测评报告

RATING REPORT



## 阿维塔11 90度 后驱版

### 辅助驾驶

Driver Assistance

行车辅助

Driving Assistance



泊车辅助

Parking Assistance



### 车辆信息 SPECIFICATION

车辆型号: SC6491ECFBEV  
Vehicle Model:

生产厂家: 重庆长安汽车股份有限公司  
Manufacturer: Chongqing Changan Automobile Co., Ltd.

能源类型: 新能源  
Energy Type: EV

辅助驾驶软件版本: AVATR.OS 2.3.0.003  
ADAS System Version:

辅助驾驶软件名称: IADS Pro2023  
ADAS System Name:

### 传感器配置 SENSOR TYPE

智能驾驶芯片: 200Tops  
Ultrasonic Wave Radar:

超声波雷达: 12个  
Ultrasonic-Wave Radar:

毫米波雷达: 6个  
Millimeter Wave Radar:

摄像头: 15个  
Camera:

激光雷达: 3个  
Laser Radar:

其他传感器: —  
Others:

\*本报告仅对该样品、该软件版本、该测试环境有效, 最终解释权归中汽测评所有。  
This report is only valid for the sample, the software version and the test environment, and the final interpretation is reserved by CATC.

★★★★☆  
辅助驾驶  
Driver Assistance  
行车辅助  
Driving Assistance



1 基础行车辅助

Basic Driving Assistance

得分率 96.5%  
Scoring Rate

已测车型平均得分率 86.8%  
Average Scoring Rate of Tested Vehicles

① 跟车能力  
Following Ability

得分率 98.5%  
Scoring Rate

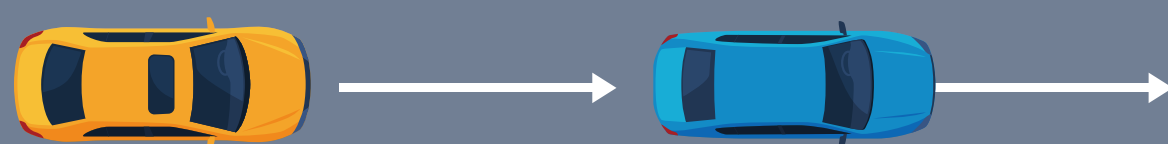
前车静止识别与响应  
Front Vehicle Static State  
Identification And Response

得分率 100%  
Scoring Rate



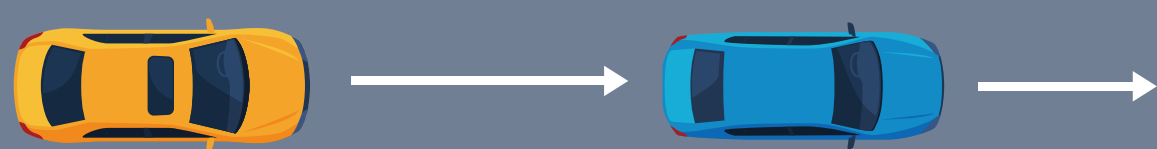
前车低速识别与响应  
Front Vehicle Low-Speed  
Identification And Response

得分率 100%  
Scoring Rate



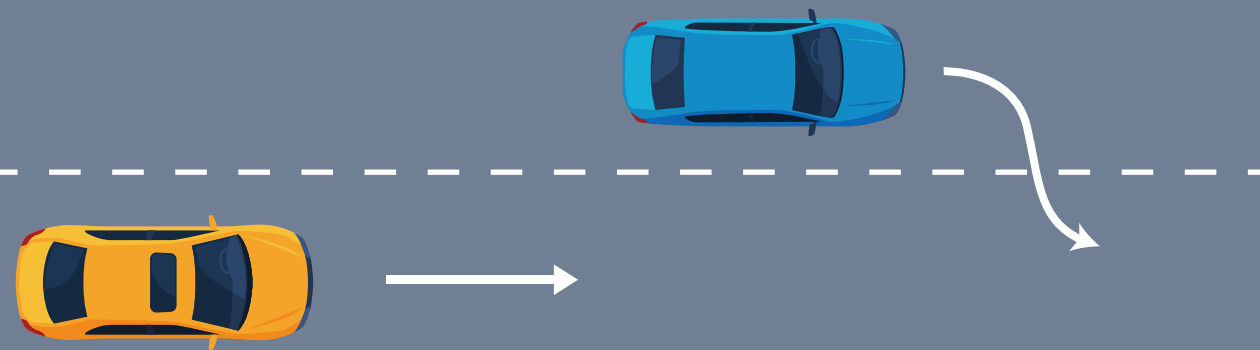
前车减速识别与响应  
Front Vehicle Deceleration  
Identification And Response

得分率 100%  
Scoring Rate



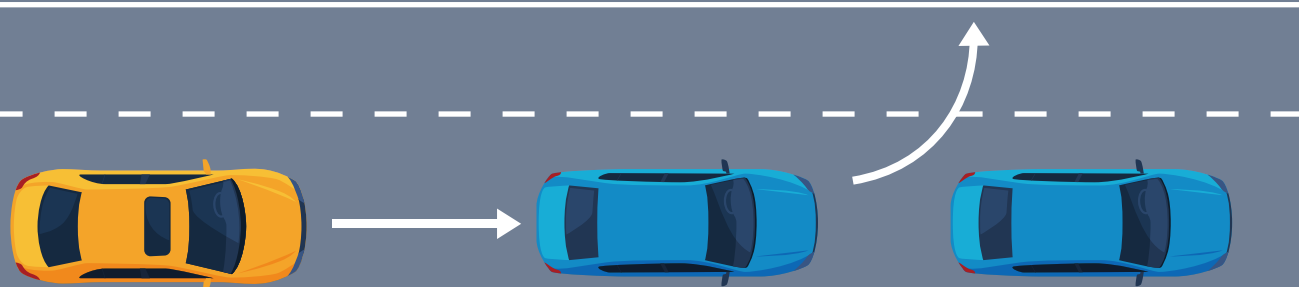
前车切入识别与响应  
Front Vehicle Cut-In Identification  
And Response

得分率 100%  
Scoring Rate



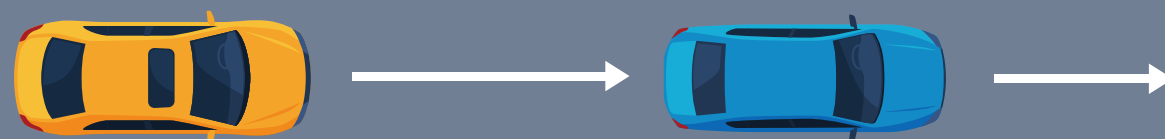
前车切出识别与响应  
Front Vehicle Cut-Out Identification  
And Response

得分率 85%  
Scoring Rate



跟随前车启停  
Start/Stop Following Front Vehicle

得分率 100%  
Scoring Rate

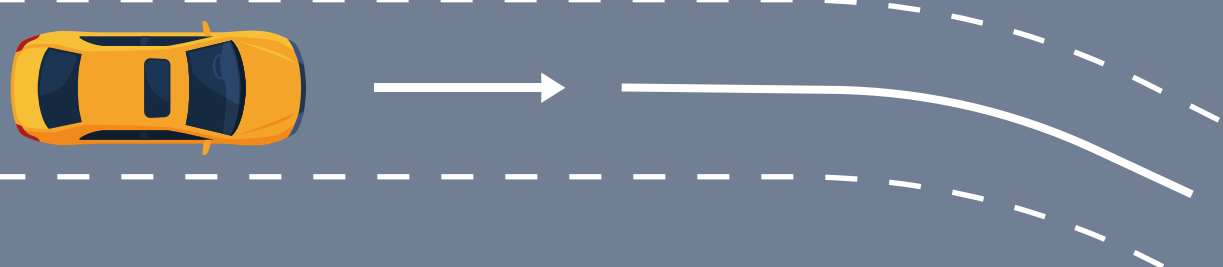


## ② 组合控制能力 Combined Control Ability

得分率 100%  
 Scoring Rate

车道居中控制  
 Lane Centering Control

得分率 100%  
 Scoring Rate



低速组合控制  
 Low-Speed Combined Control

得分率 100%  
 Scoring Rate



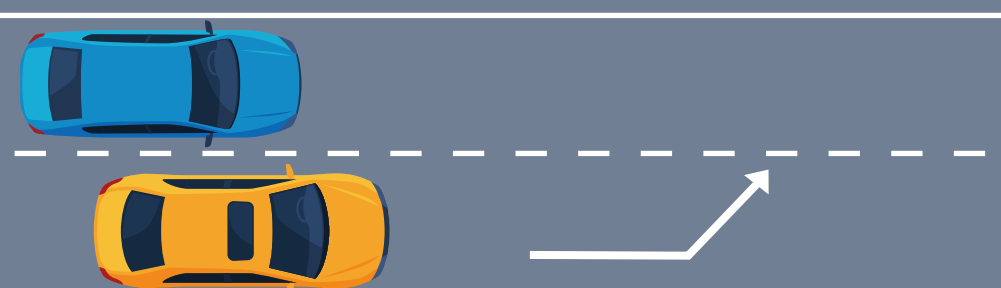
高速组合控制  
 High-Speed Combined Control

得分率 100%  
 Scoring Rate



拨杆换道能力(加分项)  
 Driver-Confirmed Lane Changing Ability  
 (Bonus Item)

得分率 100%  
 Scoring Rate



## ③ 紧急避险能力 Collision Avoidance Ability

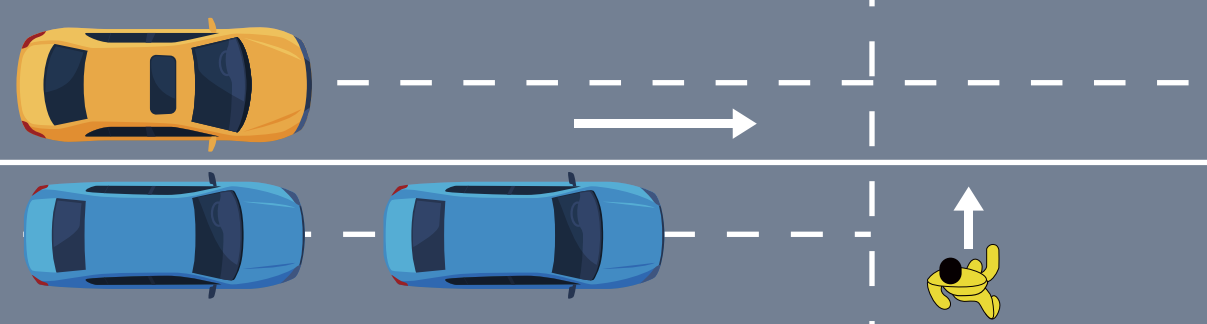
得分率 100%  
 Scoring Rate

(1) 行人及二轮车横穿  
 Pedestrian And Two-Wheeled Vehicle Crossing

得分率 100%  
 Scoring Rate

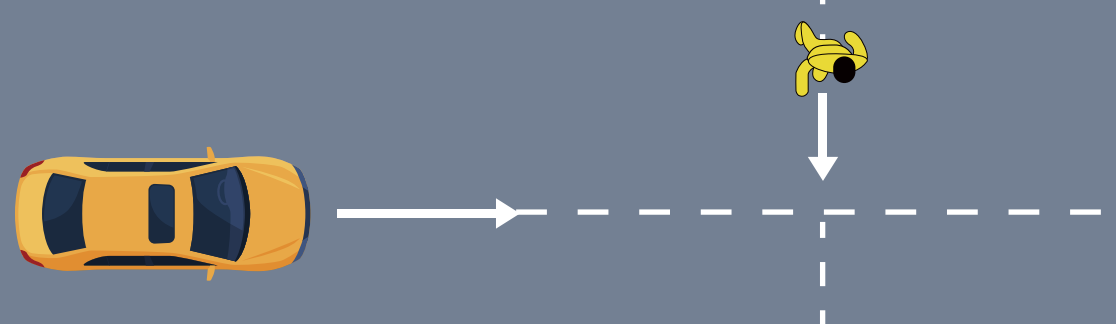
有遮挡行人横穿  
 Pedestrian Crossing With Shelter

得分率 100%  
 Scoring Rate



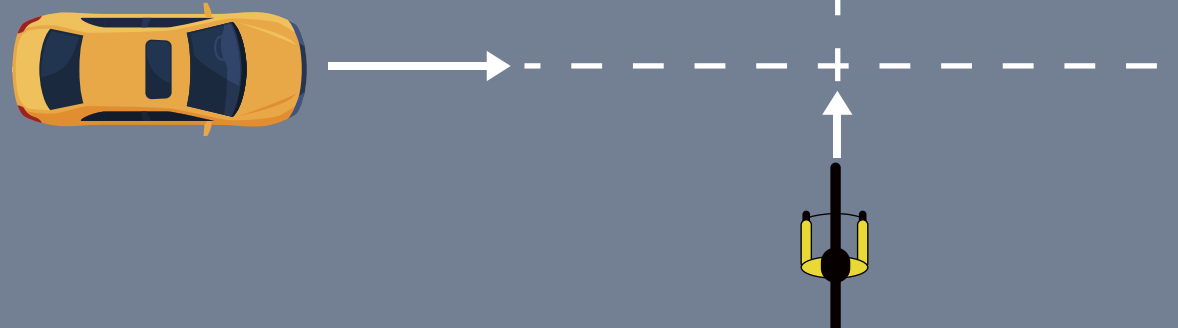
夜间行人横穿  
 Pedestrian Crossing At Night

得分率 100%  
 Scoring Rate



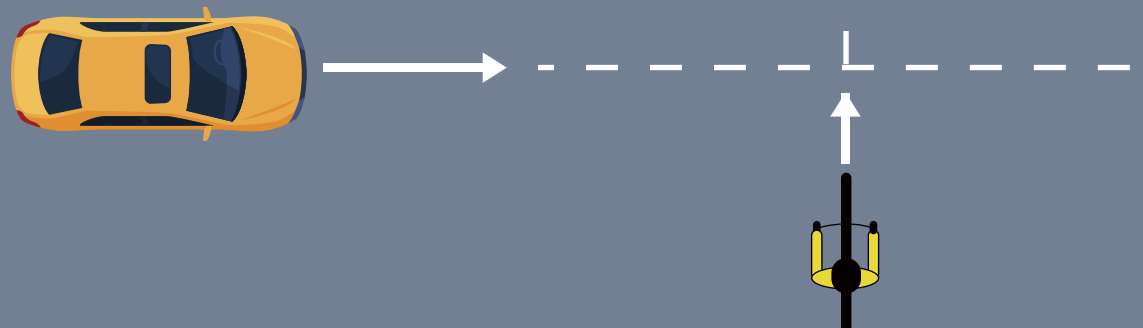
二轮车横穿  
 Two-Wheeled Vehicle Crossing

得分率 100%  
 Scoring Rate



电动二轮车横穿  
 Electrical Two-Wheeled Vehicle Crossing

得分率 100%  
 Scoring Rate

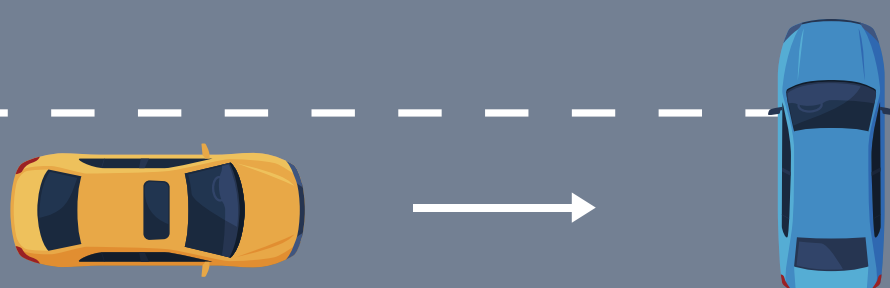


(2) 交通事故  
 Traffic Accidents

得分率 100%  
 Scoring Rate

事故车辆识别与响应  
 Accident Vehicle Identification And Response

得分率 100%  
 Scoring Rate



(3) 道路施工  
Road Construction

得分率 100%  
Scoring Rate

锥桶识别与响应  
Conical Barrel Identification And Response

得分率 100%  
Scoring Rate



(4) 模拟危险场景 (加分项)  
Simulated Dangerous Scenario (Bonus Item)

得分率 —  
Scoring Rate

④ 驾驶员交互  
Driver Engagement

得分率 86%  
Scoring Rate

(1) 系统提示  
System Prompt

得分率 100%  
Scoring Rate

(2) 驾驶员监测  
Driver Monitoring

得分率 80%  
Scoring Rate

基础行车辅助试验现场照片  
Basic Driving Assistance Test Photos



2 领航行车辅助  
Pilot Driving Assistance

得分率 92.4%  
Scoring Rate

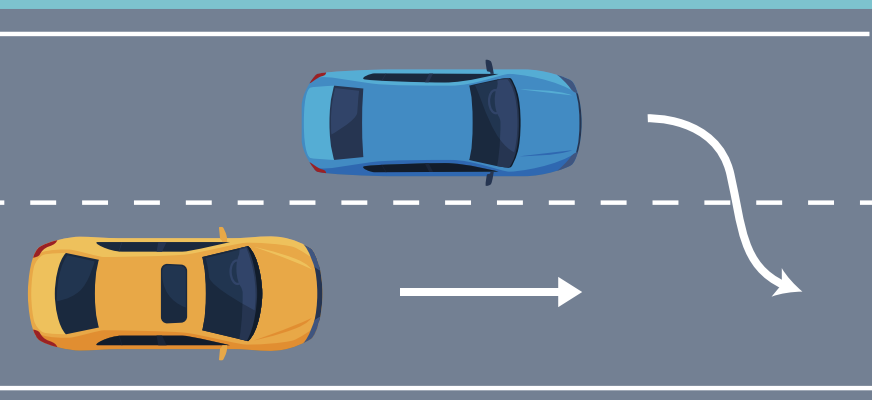
Pilot Driving Assistance

已测车型平均得分率 90.2%  
Average Scoring Rate of Tested Vehicles

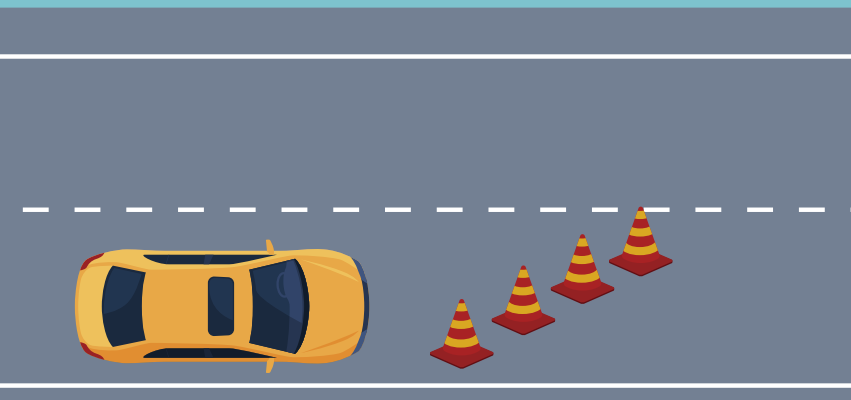
① 主动换道能力  
Active lane changing ability

得分率 91.4%  
Scoring Rate

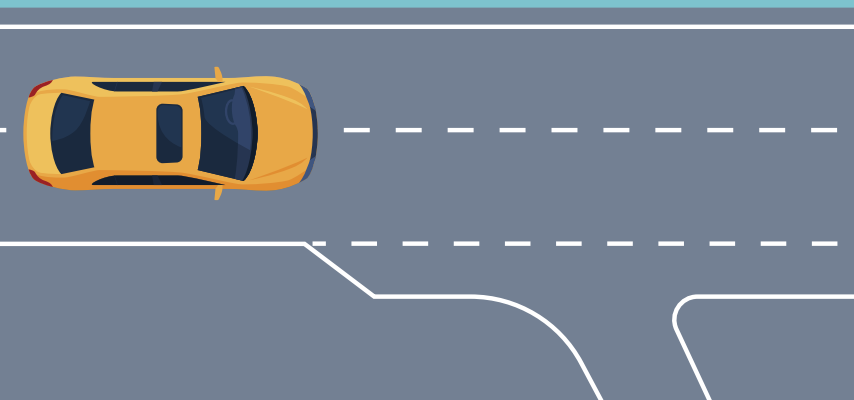
车道占用换道  
Lane Changing For Lane Occupied  
得分率 88.0%  
Scoring Rate



突发情况换道  
Lane Changing For Emergency  
得分率 94.0%  
Scoring Rate



导航路线换道  
Navigation Route Changing  
得分率 95.2%  
Scoring Rate



## ② 连续运行能力

Continuous Operation Ability

### (1) 通行成功率

Traffic Success Rate

### (2) 系统接管频次

System Takeover Frequency

### (3) 车辆行驶舒适度

Driving Comfort

得分率 96.5%  
Scoring Rate

得分率 100%  
Scoring Rate

得分率 100%  
Scoring Rate

得分率 82.5%  
Scoring Rate

## 领航行车辅助试验现场照片

Pilot Driving Assistance Test Photos



## 综合评价 Comments

C-ICAP基础行车辅助测试评价：

该车型在跟车能力中，在前车切出识别与响应场景中出现减速度过大的现象；  
在组合控制能力和紧急避险能力中，能够满足规程要求；  
在驾驶员交互中，疲劳检测报警时间晚于规程要求。

C-ICAP领航行车辅助测试评价：

该车型在主动换道能力中，在部分场景下存在减速度过大或者无法换道的现象；  
在连续运行能力中，存在横向加速度过大的现象。

C-ICAP Basic Driving Assistance:

In the Following Ability, the phenomenon of excessive deceleration occurred in the Front Vehicle Cut-out Identification and Response.

In Combined Control Ability and Emergency Avoidance Ability, the vehicle can meet the requirements of C-ICAP;

In the Driver Engagement, the fatigue detection alarm time is later than the requirements.

C-ICAP Pilot Driving Assistance:

In the Active Lane Change Ability, there is a phenomenon of excessive deceleration or inability to change lanes in some scenarios;

In the Continuous Operation Ability, there is a phenomenon that the lateral acceleration is too large.

★★★★★  
辅助驾驶  
Driver Assistance  
泊车辅助  
Parking Assistance



1

基础泊车辅助

Basic Parking Assistance

得分率 Scoring Rate 97.9%

已测车型平均得分率 Average Scoring Rate of Tested Vehicles 86.9%

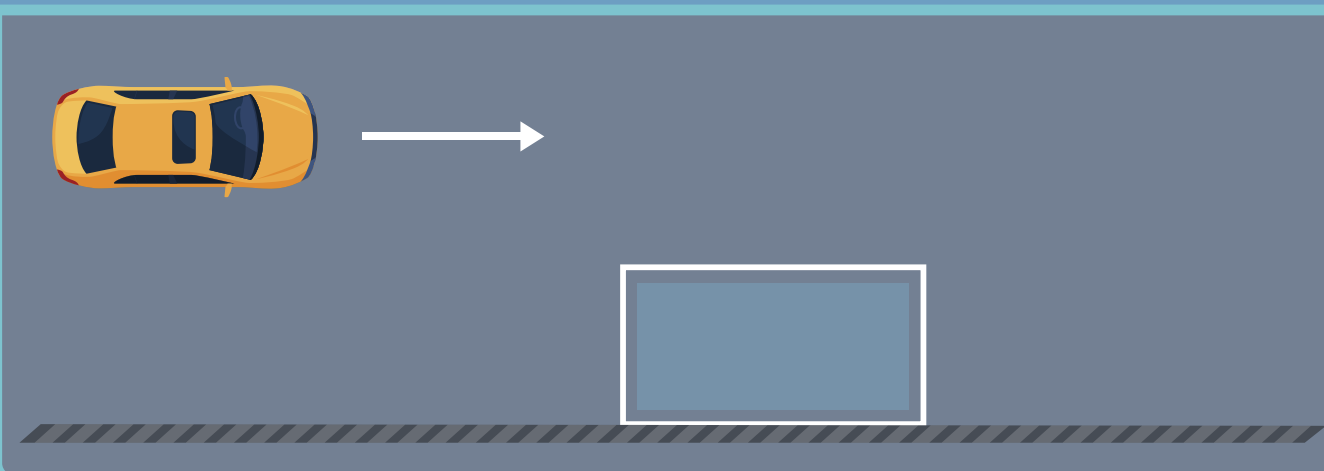
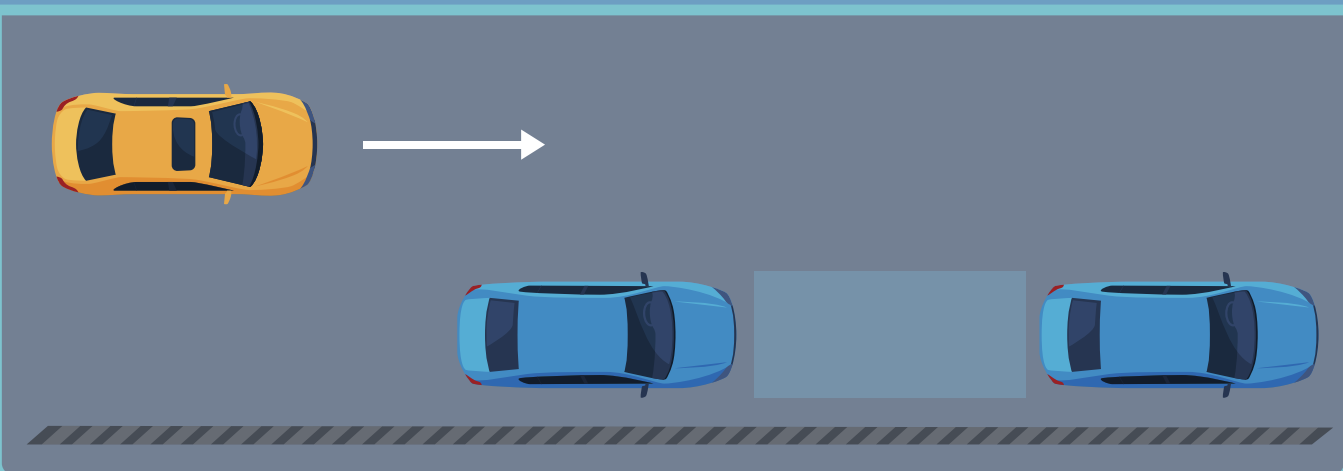
① 车位前泊入能力

Parking Ability in Front Of Parking Space

得分率 Scoring Rate 96.9%

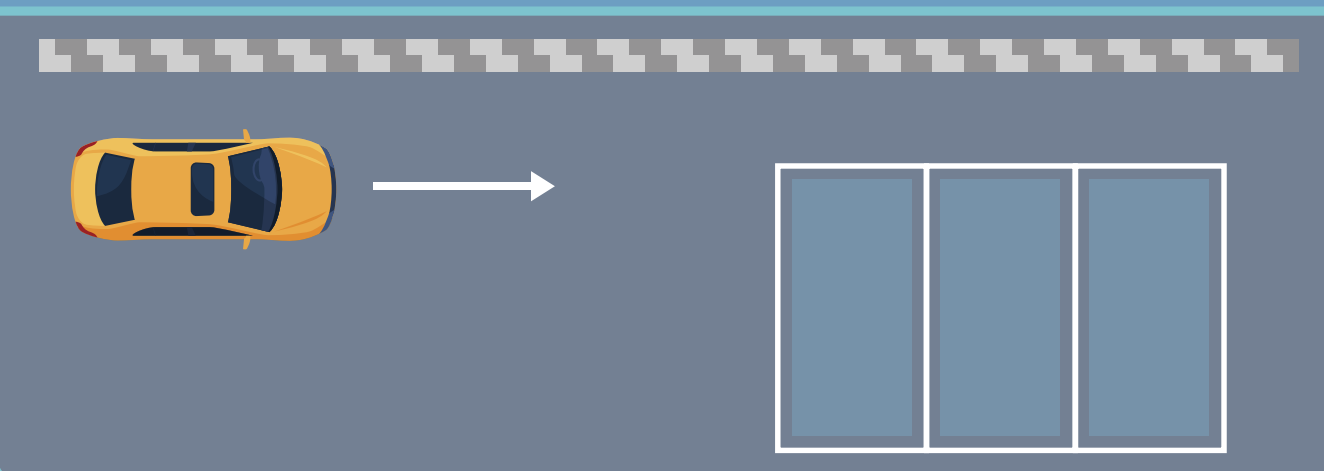
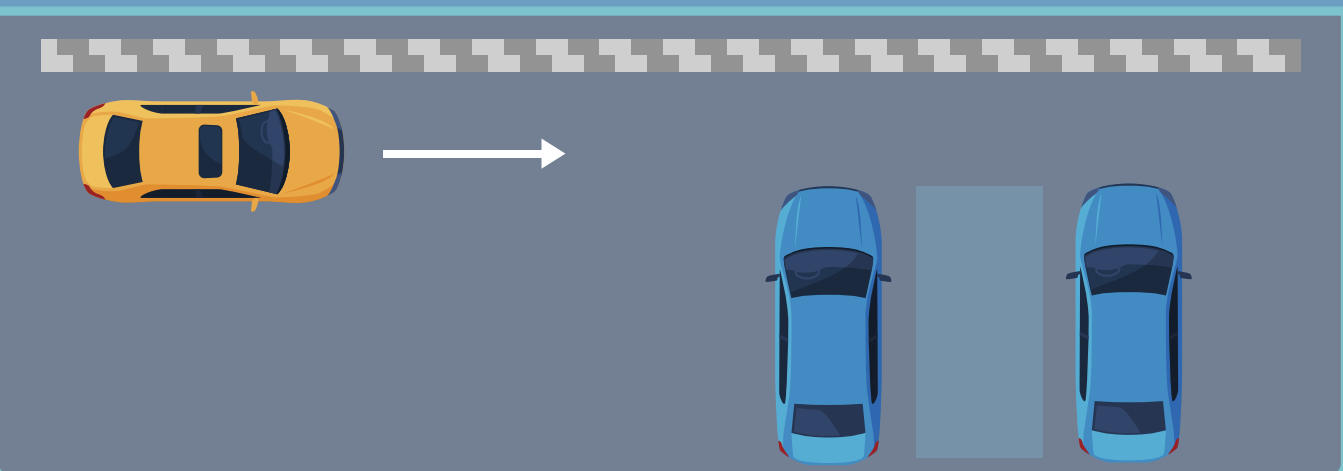
平行车位  
Parallel Parking Space

得分率 Scoring Rate 96.0%



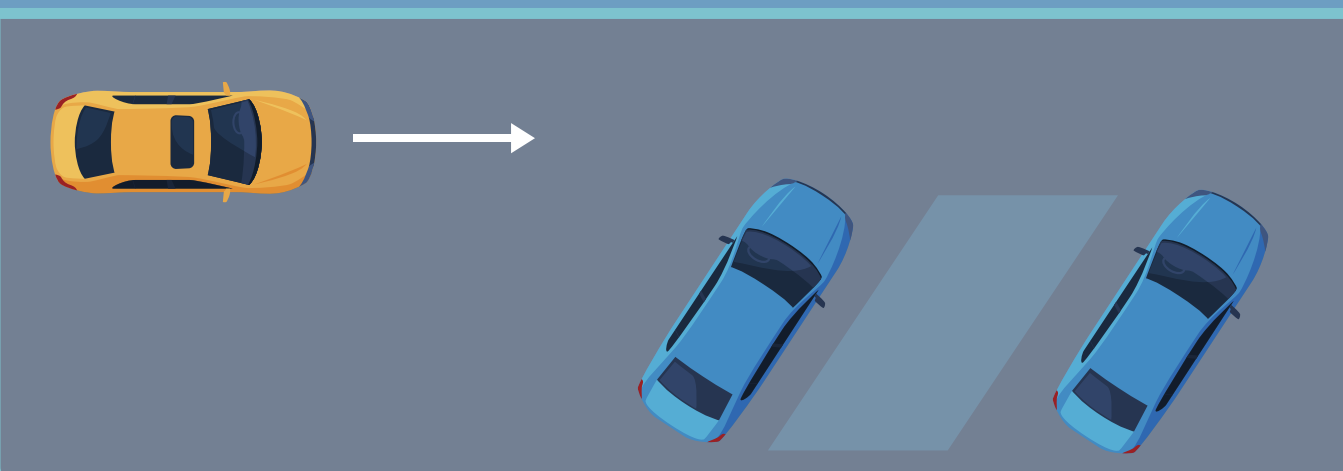
垂直车位  
Vertical Parking Space

得分率 Scoring Rate 98.0%



斜车位  
Oblique Parking Space

得分率 Scoring Rate 98.3%



## ② 车位前遥控泊车能力

Remote parking ability in front of parking space

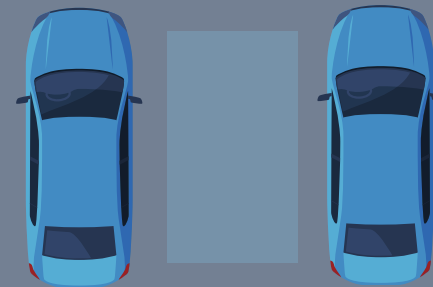
得分率 50.0%  
Scoring Rate

遥控器故障  
Failure Of Remote Controller

得分率 100.0%  
Scoring Rate

遥控功能误用  
Incorrect Use Of Remote-Control Function

得分率 0.0%  
Scoring Rate



## 基础泊车辅助试验现场照片

Basic Parking Assistance Test Photos



## 2 记忆泊车辅助

Memory Parking Assistance

Comments  
得分率 93.3%  
Scoring Rate

已测车型平均得分率  
Average Scoring Rate of Tested Vehicles

一键召唤能力  
One-Button Calling Ability

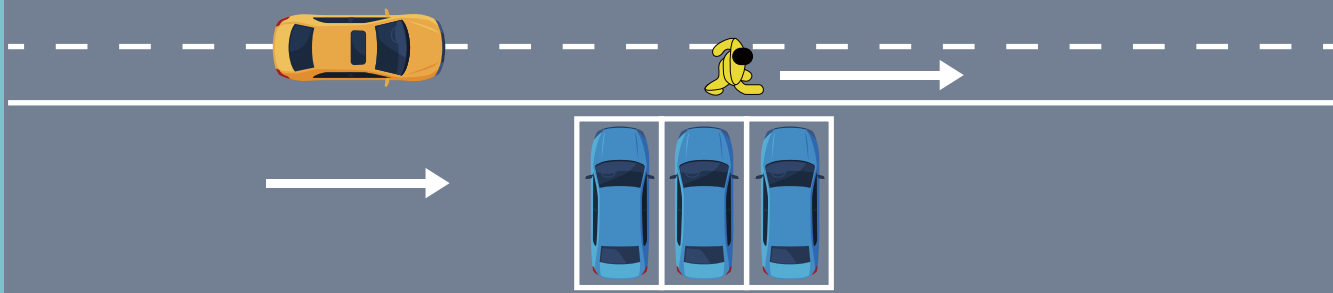
得分率 90.4%  
Scoring Rate

室外停车场泊出能力  
Outdoor Parking Lot Berthing-Out Ability

得分率 92.5%  
Scoring Rate

室外停车场巡航能力  
Outdoor Parking Lot Cruise Ability

得分率 92.5%  
Scoring Rate

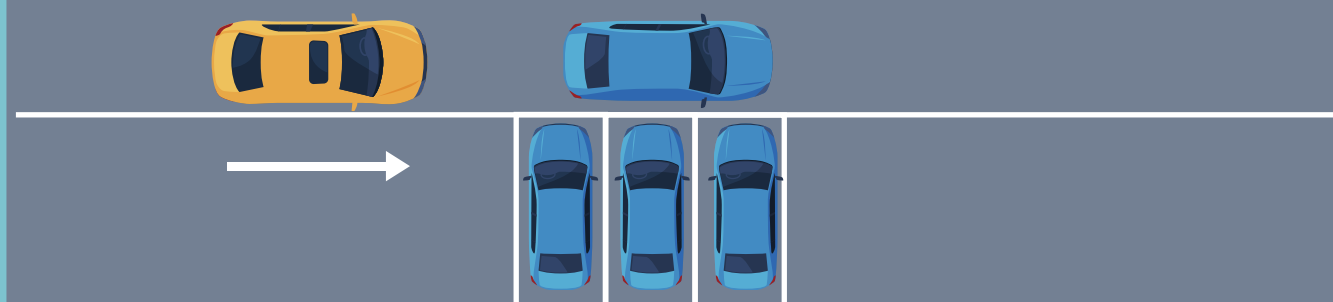


室内停车场泊出能力  
Indoor Parking Lot Berthing-Out Ability

得分率 91.0%  
Scoring Rate

室内停车场巡航能力  
Indoor Parking Lot Cruise Ability

得分率 88.0%  
Scoring Rate



一键泊车能力  
One-Button Parking Ability

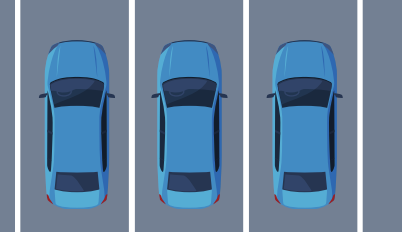
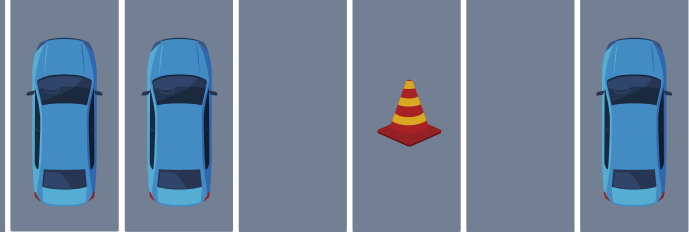
得分率 94.0%  
Scoring Rate

室外停车场巡航能力  
Outdoor Parking Lot Cruise Ability

得分率 94.0%  
Scoring Rate

室内停车场巡航能力  
Indoor Parking Lot Cruise Ability

得分率 94.0%  
Scoring Rate



记忆泊车辅助试验现场照片

Memory Parking Assistance Test Photos



综合评价  
Comments

C-ICAP基础泊车辅助测试评价:

该车型在平行车位-空间车位(狭小尺寸)中,存在揉库次数较多的情况;  
在垂直车位-车位线车位、斜车位-空间车位(标准尺寸)中,存在停放位置不居中的现象;  
在遥控泊车中,存在遥控距离过远的现象。

C-ICAP记忆泊车辅助测试评价:

该车型在部分场景下(例如:行人穿行等)制动力过大,导致泊车系统中断。

C-ICAP Basic Parking Assistance:

In the Parallel Parking Space-Spatial Parking Space (reduced size), there are more number of parking;  
In the Vertical Parking Space-Parking Space with Lines, Oblique Parking Space-Spatial Parking Space (standard size), there is a phenomenon that the parking position is not in the middle.  
In Remote Control Parking, the remote control distance is too far.

C-ICAP Memory Parking Assistance:

In some scenarios (such as pedestrian crossing, etc.), the braking force of this vehicle is too large, resulting in the interruption of the parking system.