

C-NCAP 测评车辆性能画像

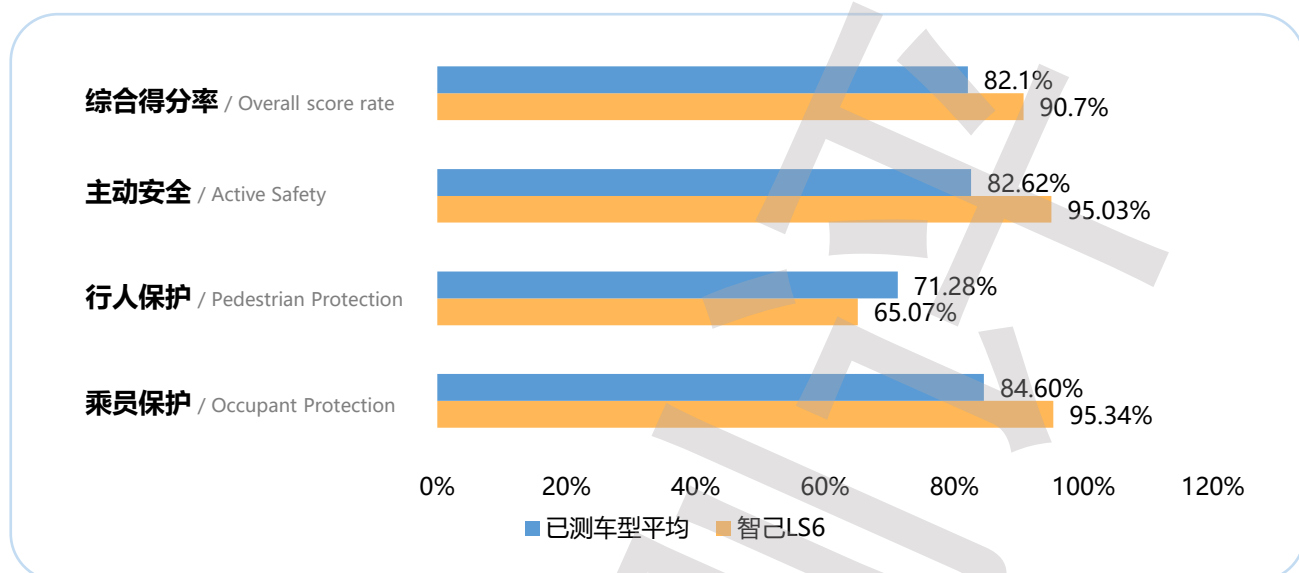
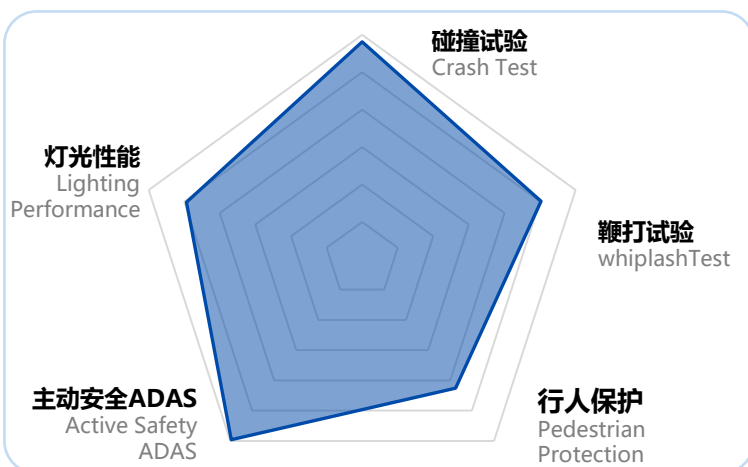
C-NCAP Performance portrait of the test vehicle

智己LS6

款型 / Styles	类别 / Category	指导价格 / Guide Price
Max 标准版	SUV	¥ 22.99万元

综合得分率
Overall score rate

90.7%

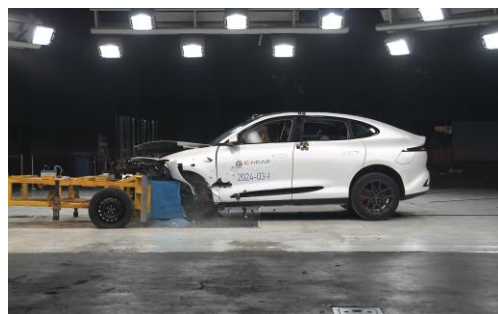
乘员保护 Occupant Protection: 95.34%

行人保护 Pedestrian Protection: 65.07%

主动安全 Active Safety: 95.03%

项目 / Item	部分得分率 / Partial Scoring Rate	权重 / Weighting	部分得分率*权重 / Partial Score Rate*Weighting
乘员保护 / Occupant Protection	95.34%	60%	57.20%
行人保护 / Pedestrian Protection	65.07%	15%	9.76%
主动安全 / Active Safety	95.03%	25%	23.76%
电安全 / Electrical Safety		⚠️	
综合得分率 / Overall score rate			90.7%
星级 / Star Rating			★★★★★

乘员保护 Occupant Protection	碰撞: 69.344 (满分72分) Crash: 69.344 (Full score of 72)	发生碰撞时车内乘员安全指数 Occupant safety index during collision/crash
	鞭打: 5.647 (满分7分) Whiplash: 5.647 (Full score of 7)	被追尾时车内乘员安全指数 Occupant safety index when rear-ended
行人保护 Pedestrian Protection	头型: 4.898 (满分10分) Headform: 4.898 (Full score of 10)	对车外行人头部的保护效果 Protection effect on the head of pedestrians
	腿型: 4.862 (满分5分) Legform: 4.862 (Full score of 5)	对车外行人腿部的保护效果 Protection effect on the legs of pedestrians
主动安全 Active Safety	CCR: 11 (满分11分) CCR: 11 (Full score of 11)	车对车自动刹车能力 Car to car AEB performance
	VRU_Ped: 10 (满分10分) VRU_Ped: 10 (Full score of 10)	车对行人自动刹车能力 Car to pedestrians AEB performance
	VRU_TW: 11 (满分11分) VRU_TW: 11 (Full score of 11)	车对二轮车自动刹车能力 Car to TW AEB performance
	LKA: 3 (满分3分) LKA: 3 (Full score of 3)	车道保持能力 Lane keeping ability
	照明: 7.874 (满分10分) Lighting: 7.874 (Full score of 10)	车辆照明效果 Vehicle Lighting Effectiveness



备注: 带有👍标志的代表该车型此项目在当前测评版本全部车型中排名前20%。

Note: Those with a 👍 mark represent the top 20% of all models in the current evaluation version.

扫码查询更多车型成绩。
Scan the code to check the results of more models.