



中国智能网联汽车技术规程

测评报告

RATING REPORT



阿维塔11 90度 后驱版

辅助驾驶

Driver Assistance

行车辅助

Driving Assistance



泊车辅助

Parking Assistance



车辆信息 SPECIFICATION

车辆型号: SC6491ECFBEV
Vehicle Model:

生产厂家: 重庆长安汽车股份有限公司
Manufacturer: Chongqing Changan Automobile Co., Ltd.

能源类型: 新能源
Energy Type: EV

辅助驾驶软件版本: AVATR.OS 2.3.0.003
ADAS System Version:

辅助驾驶软件名称: IADS Pro2023
ADAS System Name:

传感器配置 SENSOR TYPE

智能驾驶芯片: 200Tops
Ultrasonic Wave Radar:

超声波雷达: 12个
Ultrasonic-Wave Radar:

毫米波雷达: 6个
Millimeter Wave Radar:

摄像头: 15个
Camera:

激光雷达: 3个
Laser Radar:

其他传感器: —
Others:

*本报告仅对该样品、该软件版本、该测试环境有效, 最终解释权归中汽测评所有。
This report is only valid for the sample, the software version and the test environment, and the final interpretation is reserved by CATC.

★★★★☆
辅助驾驶
Driver Assistance
行车辅助
Driving Assistance



1 基础行车辅助

Basic Driving Assistance

得分率 96.5%
Scoring Rate

已测车型平均得分率 86.8%
Average Scoring Rate of Tested Vehicles

① 跟车能力
Following Ability

得分率 98.5%
Scoring Rate

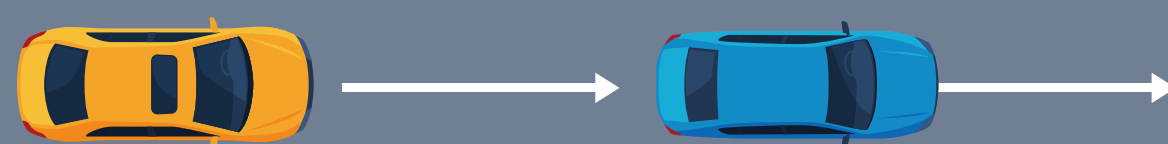
前车静止识别与响应
Front Vehicle Static State
Identification And Response

得分率 100%
Scoring Rate



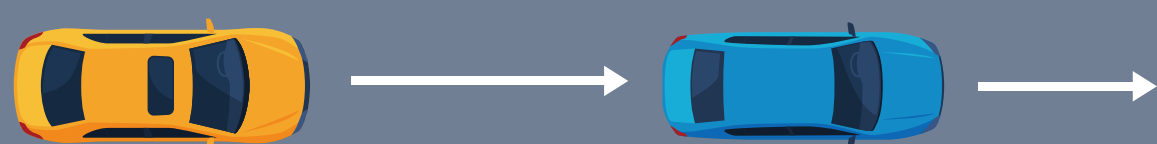
前车低速识别与响应
Front Vehicle Low-Speed
Identification And Response

得分率 100%
Scoring Rate



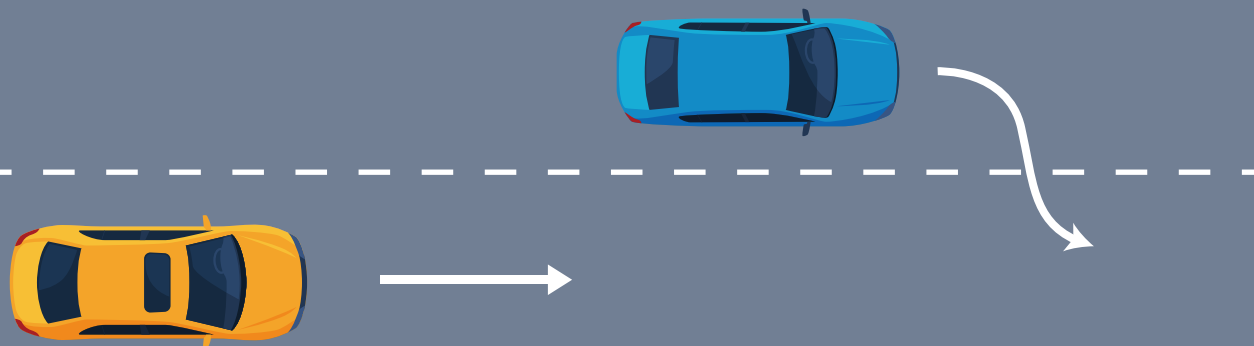
前车减速识别与响应
Front Vehicle Deceleration
Identification And Response

得分率 100%
Scoring Rate



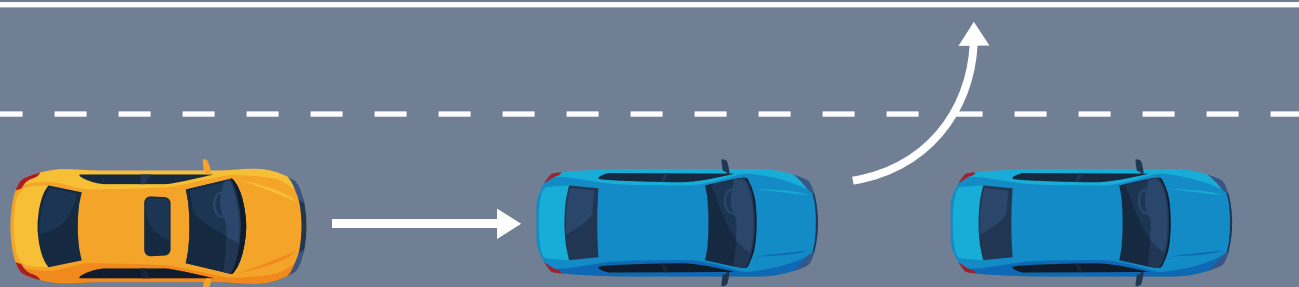
前车切入识别与响应
Front Vehicle Cut-In Identification
And Response

得分率 100%
Scoring Rate



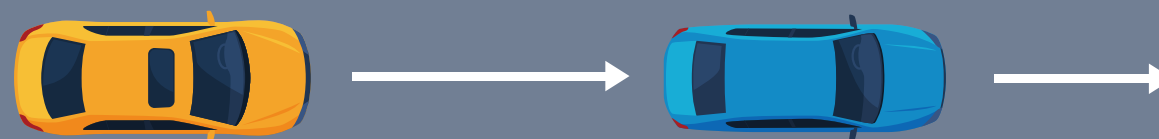
前车切出识别与响应
Front Vehicle Cut-Out Identification
And Response

得分率 85%
Scoring Rate



跟随前车启停
Start/Stop Following Front Vehicle

得分率 100%
Scoring Rate

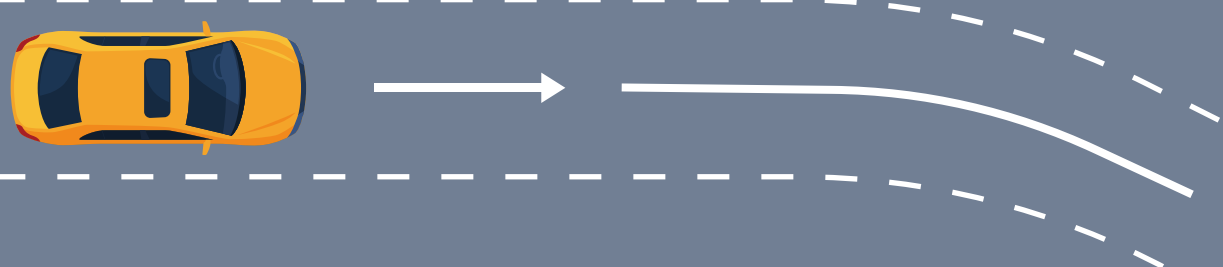


② 组合控制能力 Combined Control Ability

得分率 100%
 Scoring Rate

车道居中控制
 Lane Centering Control

得分率 100%
 Scoring Rate



低速组合控制
 Low-Speed Combined Control

得分率 100%
 Scoring Rate



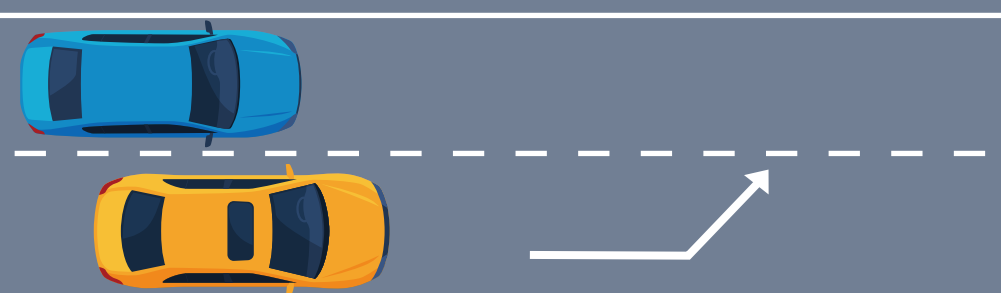
高速组合控制
 High-Speed Combined Control

得分率 100%
 Scoring Rate



拨杆换道能力(加分项)
 Driver-Confirmed Lane Changing Ability
 (Bonus Item)

得分率 100%
 Scoring Rate



③ 紧急避险能力 Collision Avoidance Ability

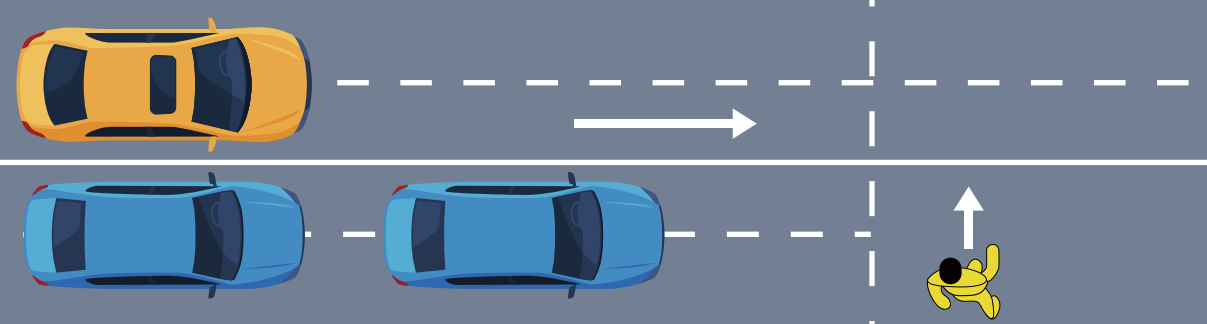
得分率 100%
 Scoring Rate

(1) 行人及二轮车横穿
 Pedestrian And Two-Wheeled Vehicle Crossing

得分率 100%
 Scoring Rate

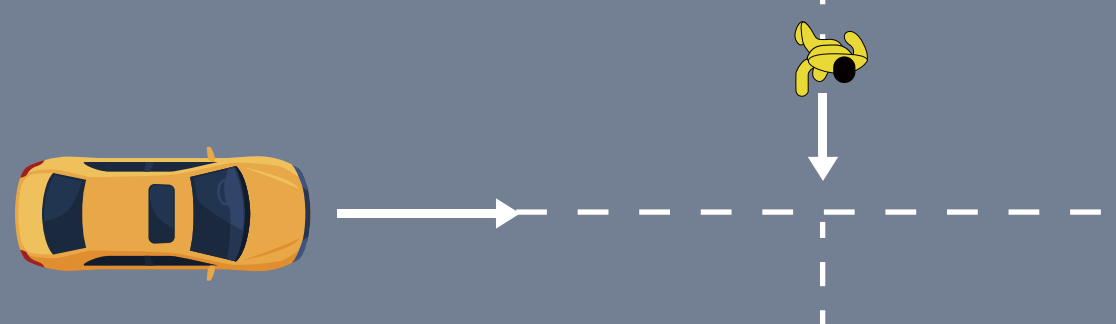
有遮挡行人横穿
 Pedestrian Crossing With Shelter

得分率 100%
 Scoring Rate



夜间行人横穿
 Pedestrian Crossing At Night

得分率 100%
 Scoring Rate



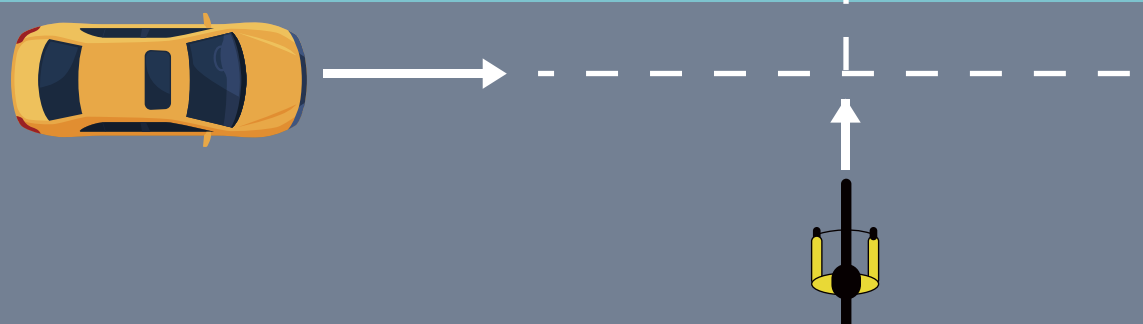
二轮车横穿
 Two-Wheeled Vehicle Crossing

得分率 100%
 Scoring Rate



电动二轮车横穿
 Electrical Two-Wheeled Vehicle Crossing

得分率 100%
 Scoring Rate

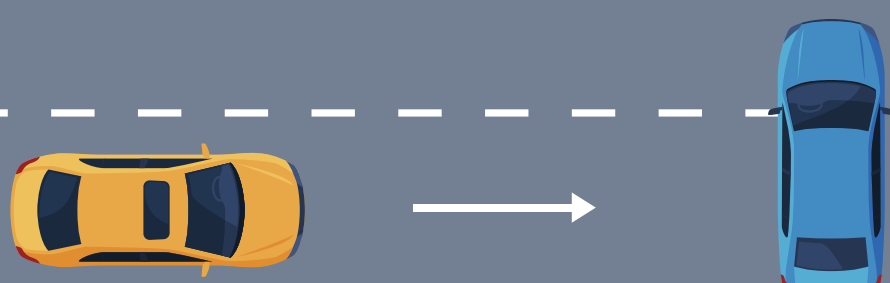


(2) 交通事故
 Traffic Accidents

得分率 100%
 Scoring Rate

事故车辆识别与响应
 Accident Vehicle Identification And Response

得分率 100%
 Scoring Rate



(3) 道路施工
Road Construction

得分率 100%
Scoring Rate

锥桶识别与响应
Conical Barrel Identification And Response

得分率 100%
Scoring Rate



(4) 模拟危险场景 (加分项)
Simulated Dangerous Scenario (Bonus Item)

得分率 —
Scoring Rate

④ 驾驶员交互
Driver Engagement

得分率 86%
Scoring Rate

(1) 系统提示
System Prompt

得分率 100%
Scoring Rate

(2) 驾驶员监测
Driver Monitoring

得分率 80%
Scoring Rate

基础行车辅助试验现场照片
Basic Driving Assistance Test Photos



2 领航行车辅助
Pilot Driving Assistance

得分率 92.4%
Scoring Rate

Pilot Driving Assistance

已测车型平均得分率 90.2%
Average Scoring Rate of Tested Vehicles

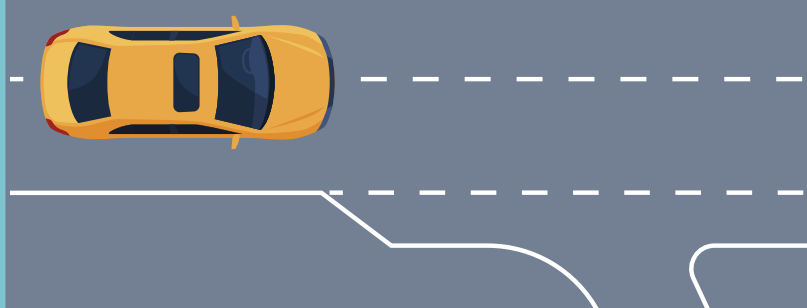
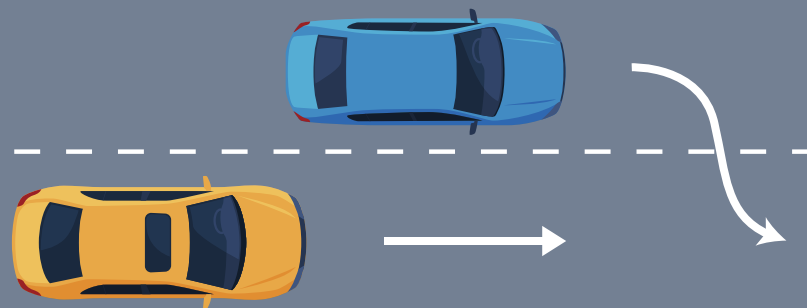
① 主动换道能力
Active lane changing ability

得分率 91.4%
Scoring Rate

车道占用换道 得分率 88.0%
Lane Changing For Lane Occupied Scoring Rate

突发情况换道 得分率 94.0%
Lane Changing For Emergency Scoring Rate

导航路线换道 得分率 95.2%
Navigation Route Changing Scoring Rate



② 连续运行能力

Continuous Operation Ability

(1) 通行成功率

Traffic Success Rate

(2) 系统接管频次

System Takeover Frequency

(3) 车辆行驶舒适度

Driving Comfort

得分率 96.5%
Scoring Rate

得分率 100%
Scoring Rate

得分率 100%
Scoring Rate

得分率 82.5%
Scoring Rate

领航行车辅助试验现场照片

Pilot Driving Assistance Test Photos



综合评价 Comments

C-ICAP基础行车辅助测试评价:

跟车能力项目中:该车型在所测场景中均未发生碰撞,仅在前车切出识别与响应场景中出现减速度过大的现象。

组合控制能力项目中:该车型在所测场景中均符合规程要求。

紧急避险能力项目中:该车型在所测场景中均符合规程要求。

驾驶员交互项目中:该车型在疲劳检测场景中,报警时间晚于规程要求。

C-ICAP领航行车辅助测试评价:

主动换道能力项目中:该车型在所测场景中均未发生碰撞,在部分场景下存在减速度过大或者无法换道的现象。

连续运行能力项目中:该车型在测试过程中存在横向加速度过大的现象。

综上所述,该车型在行车辅助方面的测试评价结果优异。

C-ICAP Basic Driving Assistance:

In the Following Ability project: this model did not have collision in the test scenarios, and excessive deceleration occurred in the Front Vehicle Cut-out Identification and Response.

In the Combined Control Ability project: this model meets the requirements of C-ICAP in the test scenarios.

In the Emergency Avoidance Ability project: this model meets the requirements of C-ICAP in the test scenarios.

In the Driver Interaction project: in the fatigue detection, the alarm time is later than the requirements of C-ICAP.

C-ICAP Pilot Driving Assistance:

In the Active Lane Change Ability project: no collision occurred in any tested scenarios, and there is a phenomenon of excessive deceleration or inability to change lanes in some scenarios.

In the Continuous Operation Ability project: the transverse acceleration of this model is too large in the test process.

To sum up, the assessment of this model in driving assistance is excellent.

★★★★★
辅助驾驶
Driver Assistance
泊车辅助
Parking Assistance



1

基础泊车辅助

Basic Parking Assistance

得分率 Scoring Rate 97.9%

已测车型平均得分率 Average Scoring Rate of Tested Vehicles 86.9%

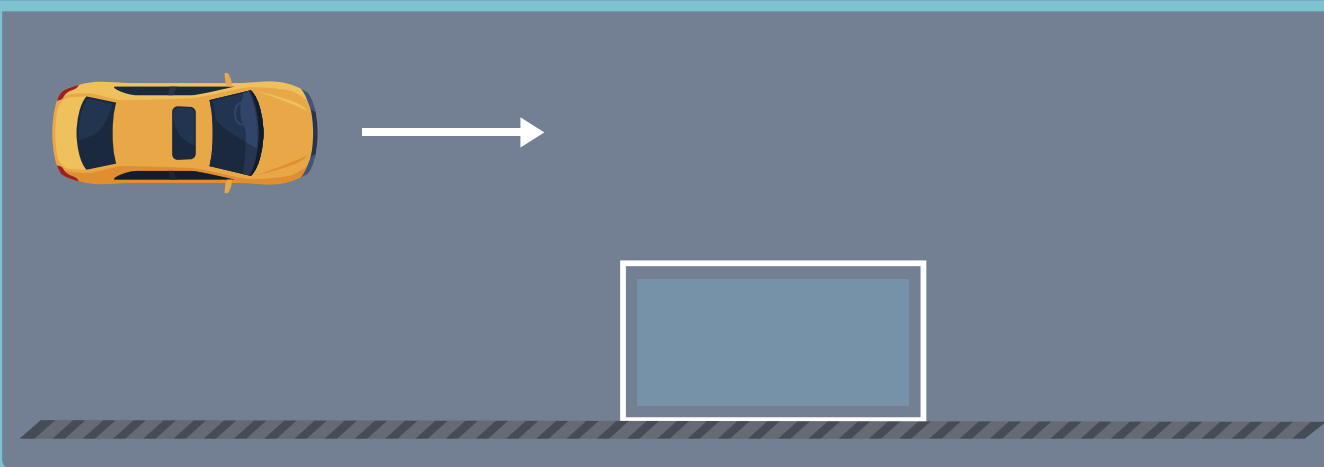
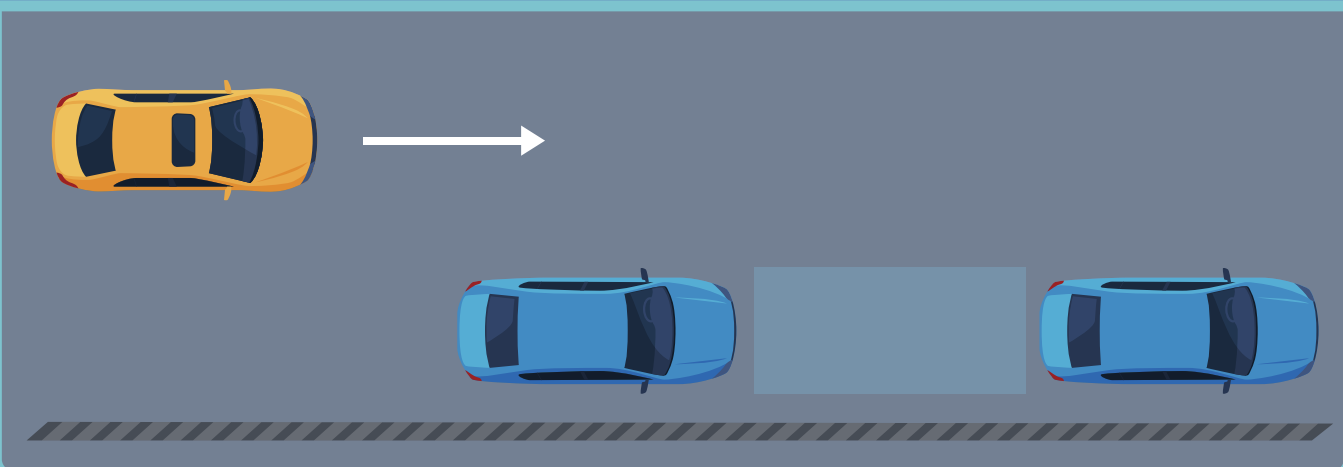
① 车位前泊入能力

Parking Ability in Front Of Parking Space

得分率 Scoring Rate 96.9%

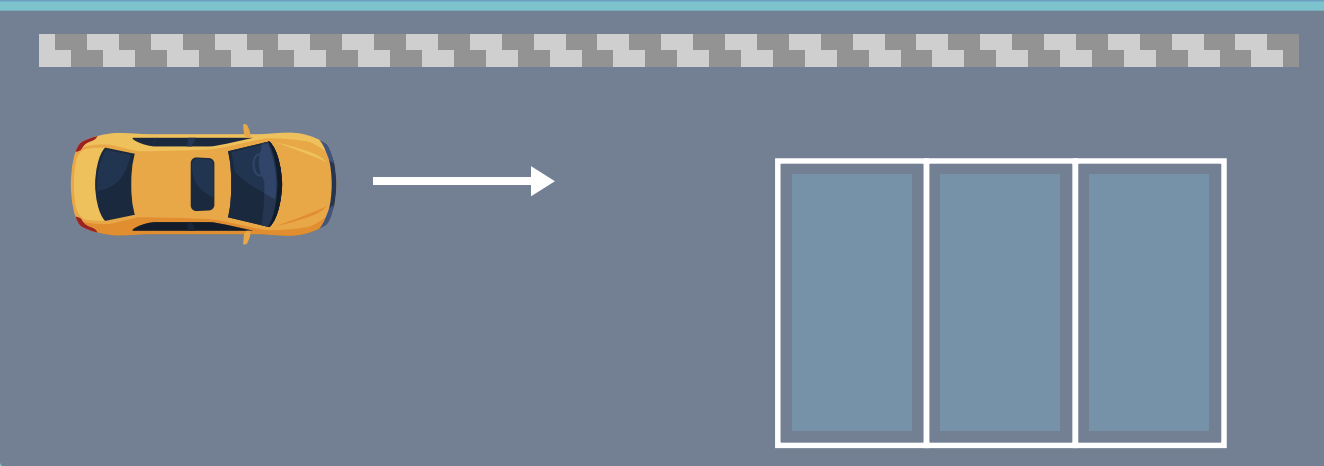
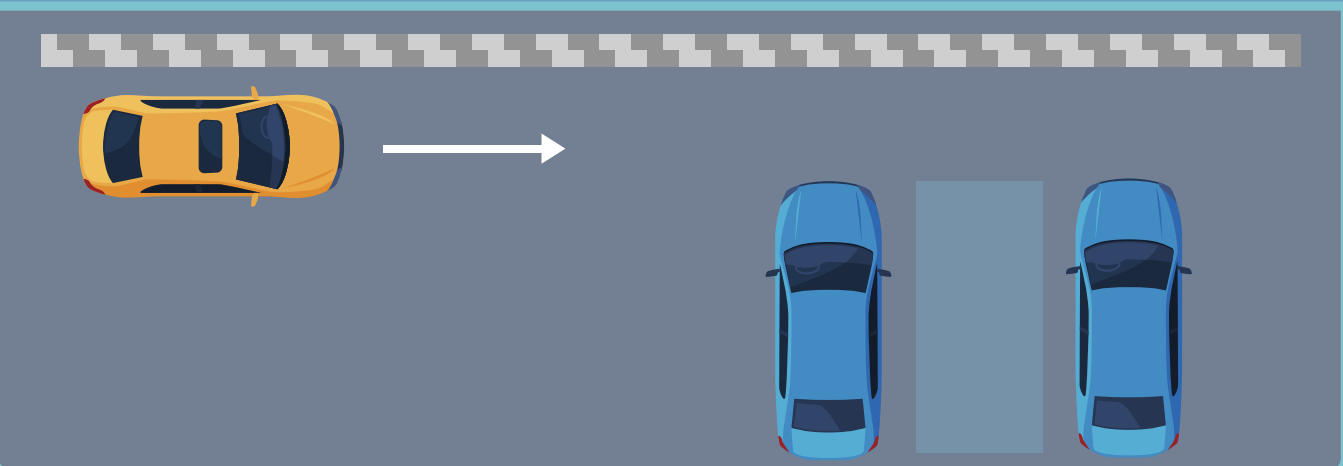
平行车位
Parallel Parking Space

得分率 Scoring Rate 96.0%



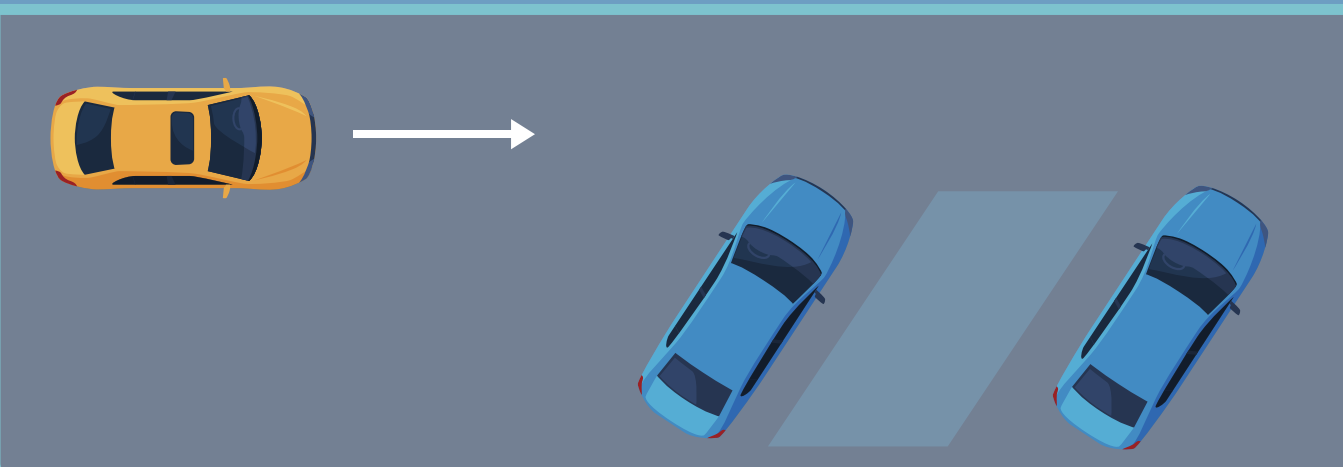
垂直车位
Vertical Parking Space

得分率 Scoring Rate 98.0%



斜车位
Oblique Parking Space

得分率 Scoring Rate 98.3%



② 车位前遥控泊车能力

Remote parking ability in front of parking space

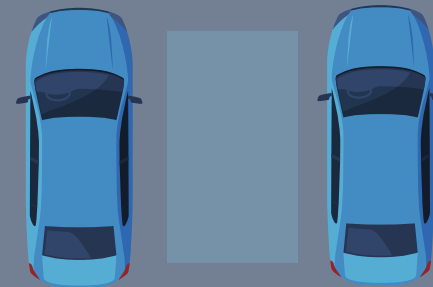
得分率 50.0%
Scoring Rate

遥控器故障
Failure Of Remote Controller

得分率 100.0%
Scoring Rate

遥控功能误用
Incorrect Use Of Remote-Control Function

得分率 0.0%
Scoring Rate



基础泊车辅助试验现场照片

Basic Parking Assistance Test Photos



2 记忆泊车辅助

Memory Parking Assistance

得分率 93.3%
Scoring Rate

已测车型平均得分率
Average Scoring Rate of Tested Vehicles

一键召唤能力
One-Button Calling Ability

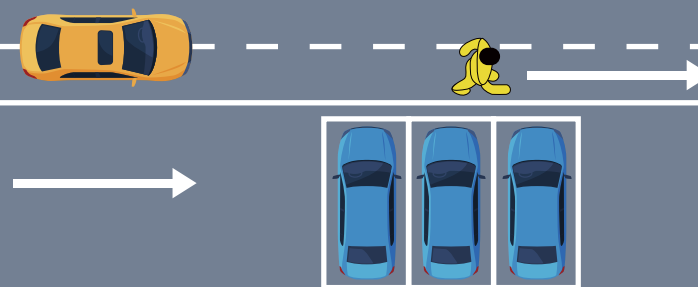
得分率 90.4%
Scoring Rate

室外停车场泊出能力
Outdoor Parking Lot Berthing-Out Ability

得分率 92.5%
Scoring Rate

室外停车场巡航能力
Outdoor Parking Lot Cruise Ability

得分率 92.5%
Scoring Rate

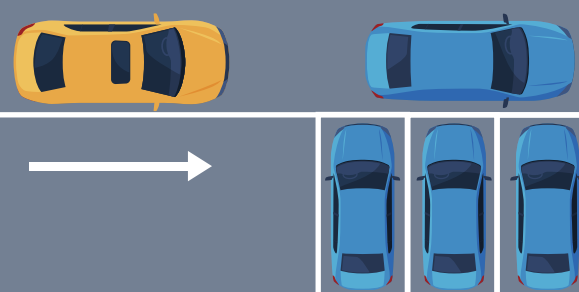


室内停车场泊出能力
Indoor Parking Lot Berthing-Out Ability

得分率 91.0%
Scoring Rate

室内停车场巡航能力
Indoor Parking Lot Cruise Ability

得分率 88.0%
Scoring Rate



一键泊车能力
One-Button Parking Ability

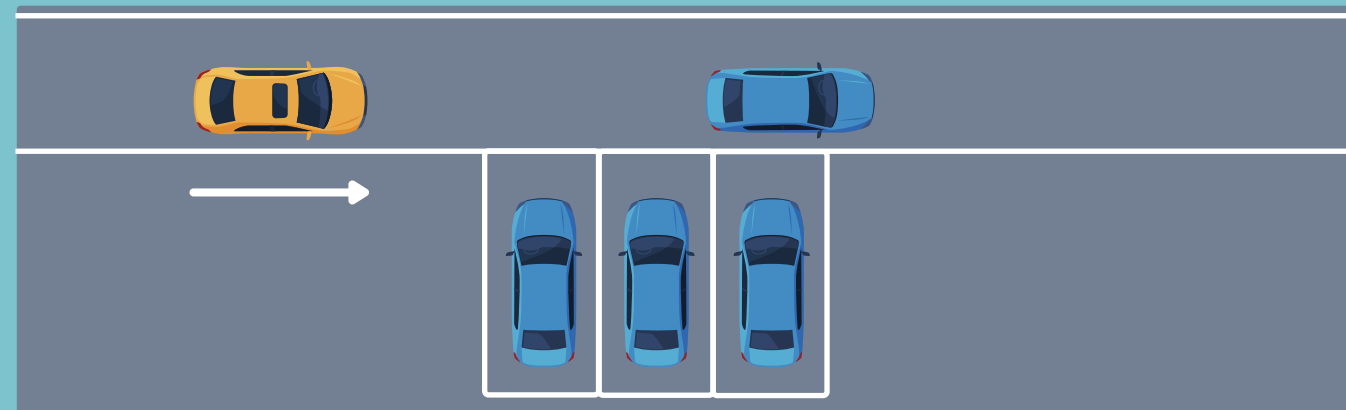
得分率 94.0%
Scoring Rate

室外停车场巡航能力
Outdoor Parking Lot Cruise Ability

得分率 94.0%
Scoring Rate

室内停车场巡航能力
Indoor Parking Lot Cruise Ability

得分率 94.0%
Scoring Rate



记忆泊车辅助试验现场照片
Memory Parking Assistance Test Photos



综合评价
Comments

C-ICAP基础泊车辅助测试评价:

在平行车位-空间车位(狭小尺寸)中,存在揉库次数较多的情况;
在垂直车位-车位线车位、斜车位-空间车位(标准尺寸)中,存在停放位置不居中的现象;
在遥控泊车中,存在遥控距离过远的现象。

C-ICAP记忆泊车辅助测试评价:

在部分场景下(例如:行人穿行等)制动力过大,导致泊车系统中断。

C-ICAP Basic Parking Assistance:

In the Parallel Parking Space-Spatial Parking Space (reduced size), there are more number of parking;
In the Vertical Parking Space-Parking Space with Lines, Oblique Parking Space-Spatial Parking Space (standard size), there is a phenomenon that the parking position is not in the middle.
In Remote Control Parking, the remote control distance is too far.

C-ICAP Memory Parking Assistance:

In some scenarios (such as pedestrian crossing, etc.), the braking force of this vehicle is too large, resulting in the interruption of the parking system.